



# Material for upholstery and cushions

## Rivestimenti per imbottiture e cuscini

# Legend

## Legenda

category	card	FABRIC	FIRE RETARDANT FABRIC	OUTDOOR FABRIC	GENUINE HARD LEATHER	REGENERATED HARD LEATHER	LEATHER	SIMIL LEATHER	FIRE RETARDANT SIMIL LEATHER	VELVET	FIRE RETARDANT VELVET
A	11	●	●	●	●	●	●	●	●	●	●
C	04, 05, 06, 10		●	●	●	●	●	●	●	●	●
D	05, 07		●	●	●	●	●	●	●	●	●
D outdoor	08, 09	●	●	●	●	●	●	●	●	●	●
E	14	●	●	●	●	●	●	●	●	●	●
F	13	●	●	●	●	●	●	●	●	●	●
G	01, 02, 03, 04, 05, 06, 14	●	●	●	●	●	●	●	●	●	●
G outdoor	09	●	●	●	●	●	●	●	●	●	●
H	06, 07, 11, 14		●	●	●	●	●	●	●	●	●
H outdoor	08	●	●	●	●	●	●	●	●	●	●
N	03, 07, 14	●	●	●	●	●	●	●	●	●	●
N outdoor	08	●	●	●	●	●	●	●	●	●	●
P	12	●	●	●	●	●	●	●	●	●	●



**Fire-retardant**  
Ignifugo



**Outdoor use**  
Adatto per uso esterno

washing / lavaggio

drying / asciugatura



**Do not wash**  
Lavaggio a secco



**Tumble dry at low temperature**  
Asciugatrice a bassa temperatura



**Hand wash**  
Lavaggio a mano



**Do not tumble dry**  
Non asciugare in asciugatrice



**Wash at max 30°C normal**  
Lavaggio normale, max 30°C



**Dry flat**  
Asciugare disteso



**Wash at max 30°C mild**  
Lavaggio delicato, max 30°C



**Do not wring**  
Non strizzare



**Wash at max 40°C normal**  
Lavaggio normale, max 40°C



ironing / stiratura



**Wash at max 60°C mild**  
Lavaggio delicato, max 60°C



**Do not iron**  
Non stirare

dry cleaning / lavaggio a secco



**Iron at low temperature**  
Stirare a bassa temperatura



**Do not dry clean**  
Lavaggio a secco non consentito



**Iron at medium temperature**  
Stirare a media temperatura



**Dry clean, perchlorethylene (PCE)**  
Lavaggio a secco con percloroetilene (PCE)



bleaching / candeggio



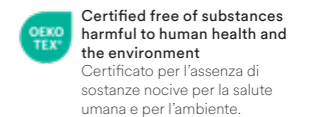
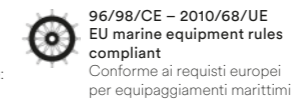
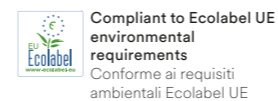
**Gentle dry cleaning with PCE**  
Lavaggio a secco delicato con PCE



**Do not bleach**  
Non candeggiare



**Any bleaching agent allowed**  
Candeggio consentito



Colours of samples are approximate. Pedrali S.p.A. reserves the right to modify or upgrade the products without prior notice.  
I colori dei campioni sono indicativi. Pedrali S.p.A. si riserva la facoltà di apportare modifiche o migliorie senza alcun preavviso.



**G59÷G69 | G190÷G197**

**G70÷G78**

**COMPOSITION**  
COMPOSIZIONE

90% New wool  
10% Nylon

90% New wool  
10% Nylon

**WEIGHT**  
GRAMMATURA

550 g/m<sup>2</sup>  
(16.22 oz/yd<sup>2</sup>)

590 g/m<sup>2</sup>  
(17.38 oz/yd<sup>2</sup>)

**ABRASION**  
ABRASIONE

100.000 cycles  
Martindale (EN ISO 12947)

100.000 cycles  
Martindale (EN ISO 12947)

**RUBBING FASTNESS**  
SOLIDITÀ ALLO SFREGAMENTO

Dry and Wet 4-5, scale 1-5  
(ISO 105-X12)

Dry and Wet 3-4, scale 1-5  
(ISO 105-X12)

**PILLING**

4, scale 1-5  
(EN ISO 12945)

3-4, scale 1-5  
(EN ISO 12945)

**LIGHT FASTNESS**  
SOLIDITÀ ALLA LUCE

6-7, scale 1-8  
(ISO 105-B02)

6, scale 1-8  
(ISO 105-B02)

**SOUND ABSORPTION**  
ASSORBIMENTO ACUSTICO

folded:  $\alpha_w = 0.95$  Class A  
(EN ISO 354)

folded:  $\alpha_w = 0.80$  Class B  
(EN ISO 354)

**FLAME RESISTANCE**  
RESISTENZA AL FUOCO

AS/NZS 1530.3  
AS/NZS 3837 Class 2  
ASTM E84 Class B Adhered  
ASTM E84 Class B Unadhered  
BS 5852 Part 1  
EN 1021 – 1/2  
IMO FTP Code 2010: Part 8  
NF D60-013  
NFPA 260  
ÖNORM B1/Q1  
SN 198 898 5.3 with treatment  
UNI 9175 Classe 1 IM  
US CA TB 117-2013 - Compliant to  
the criteria certifying the absence of  
flame retardant chemicals (AB 2998)

AS/NZS 1530.3  
AS/NZS 3837 Class 2  
ASTM E84 Class B Adhered  
ASTM E84 Class A Unadhered  
BS 5852 Part 1  
EN 1021 – 1/2  
EN 13501, B-s2, d1, with treatment  
IMO FTP Code 2010: Part 8  
NF D60-013  
NFPA 260  
ÖNORM B1/Q1  
SN 198 898 5.3 with treatment  
UNI 9175 Classe 1 IM  
US CA TB 117-2013 - Compliant to  
the criteria certifying the absence of  
flame retardant chemicals (AB 2998)

**APPROVED**  
OMOLOGATO



PRODUCT CERTIFIED  
FOR LOW CHEMICAL  
EMISSIONS:  
UL COMIGG  
UL 2818  
170166-420

**CLEANING**  
LAVAGGIO





# G

Collection / Collezione

## • kvadrat

### STEELCUT TRIO

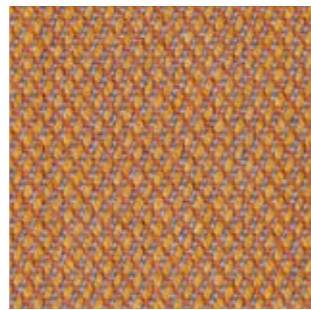
from G59 to G69  
from G190 to G197

DESIGNERS Dijkmeijer & Ridolfo

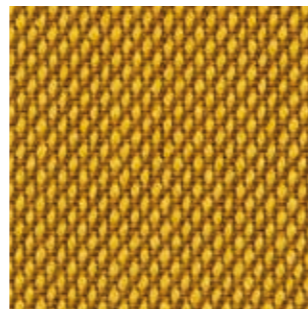
G 66



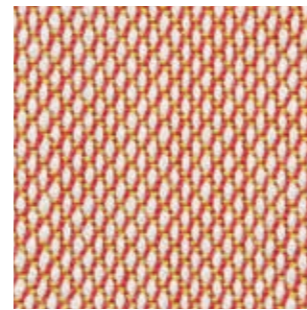
G 190



G 67



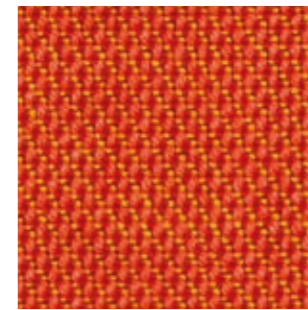
G 59



G 192



G 69



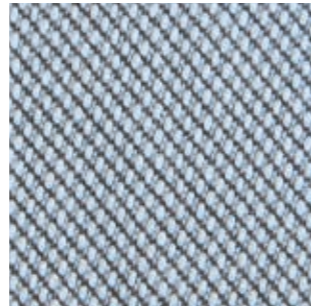
G 191



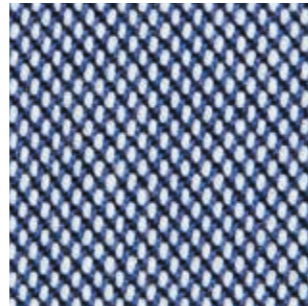
G 193



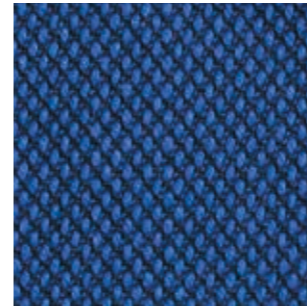
G 195



G 196



G 197



G 68



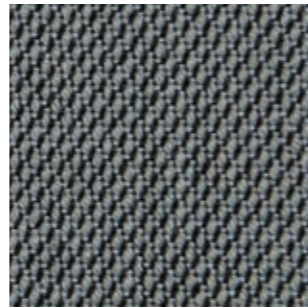
G 194



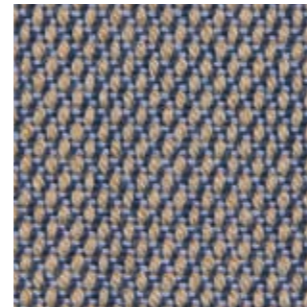
G 63



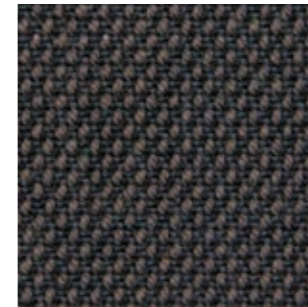
G 62



G 64



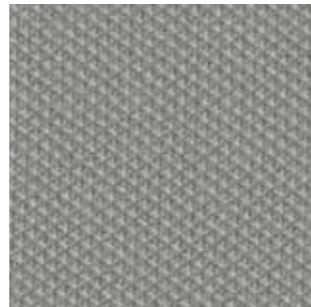
G 65



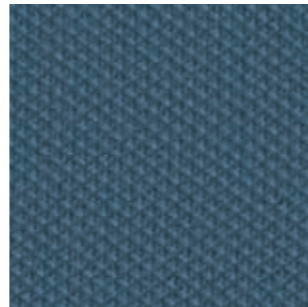
G 71



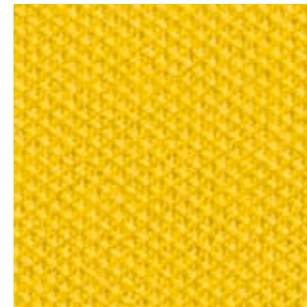
G 73



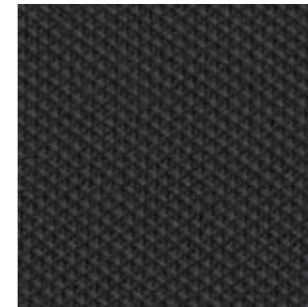
G 75



G 78



G 70



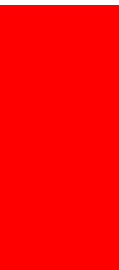
Collection / Collezione

## • kvadrat

### STEELCUT

from G70 to G78

DESIGNERS Dijkmeijer & Ridolfo





**G159÷G169**

**G250÷G258**

<b>COMPOSITION</b> COMPOSIZIONE	97% New wool 3% Recycled nylon	97% New wool 3% Recycled nylon
<b>WEIGHT</b> GRAMMATURA	415 g/m <sup>2</sup> (12.22 oz/yd <sup>2</sup> )	400 g/m <sup>2</sup> (11.80 oz/yd <sup>2</sup> )
<b>ABRASION</b> ABRASIONE	45.000 cycles Martindale (EN ISO 12947)	45.000 cycles Martindale (EN ISO 12947)
<b>RUBBING FASTNESS</b> SOLIDITÀ ALLO SFREGAMENTO	Dry and Wet 4-5, scale 1-5 (ISO 105-X12)	Dry and Wet 4-5, scale 1-5 (ISO 105-X12)
<b>PILLING</b>	3-4, scale 1-5 (EN ISO 12945)	3-4, scale 1-5 (EN ISO 12945)
<b>LIGHT FASTNESS</b> SOLIDITÀ ALLA LUCE	6, scale 1-8 (ISO 105-B02)	6, scale 1-8 (ISO 105-B02)
<b>SOUND ABSORPTION</b> ASSORBIMENTO ACUSTICO	folded: $\alpha_w$ = 0.80 Class B (EN ISO 354)	folded: $\alpha_w$ = 0.80 Class B (EN ISO 354)
<b>FLAME RESISTANCE</b> RESISTENZA AL FUOCO	AS/NZS 1530.3 AS/NZS 3837 Class 2 ASTM E84 Class A Adhered ASTM E84 Class A Unadhered BS 5852 Part 1 EN 1021 – 1/2 EN 13773 Class 1 with treatment IMO FTP Code 2010: Part 8 NF D60-013 NFPA 701 with treatment NFPA 260 ÖNORM B1/Q1 SN 198 898 5.3 with treatment UNI 9175 Classe 1 IM US CA TB 117-2013 - Compliant to the criteria certifying the absence of flame retardant chemicals (AB 2998)	AS/NZS 1530.3 AS/NZS 3837 Class 1 ASTM E84 Class A Adhered ASTM E84 Class A Unadhered BS 5852 Part 1 EN 1021 – 1/2 EN 13773 Class 1 with treatment IMO FTP Code 2010: Part 8 NF D60-013 NFPA 701 with treatment ÖNORM B1/Q1 SN 198 898 5.3 with treatment UNI 9175 Classe 1 IM US CA TB 117-2013 - Compliant to the criteria certifying the absence of flame retardant chemicals (AB 2998)

**APPROVED**  
OMOLOGATO



PRODUCT CERTIFIED  
FOR LOW CHEMICAL  
EMISSIONS  
UL COMGG  
UL 2818  
170166-420

**CLEANING**  
LAVAGGIO





# G

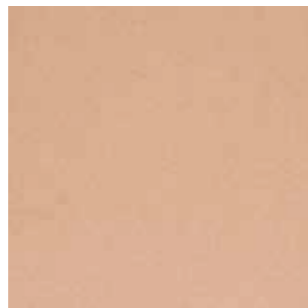
Collection / Collezione

**. kvadrat**

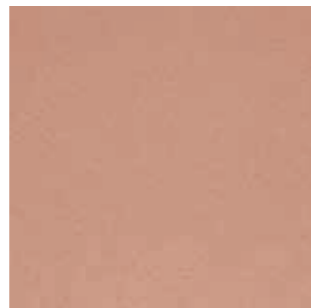
**HERO**  
from G159 to G169

**DESIGNER** Patricia Urquiola

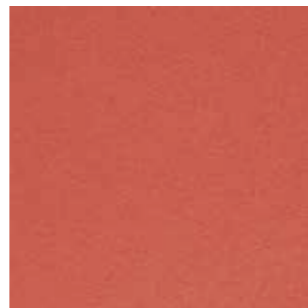
G 163



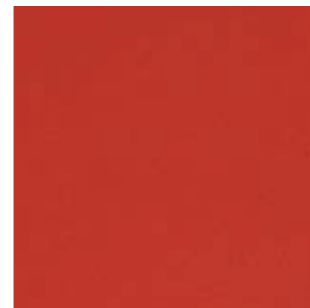
G 160



G 161



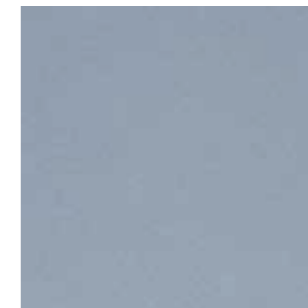
G 162



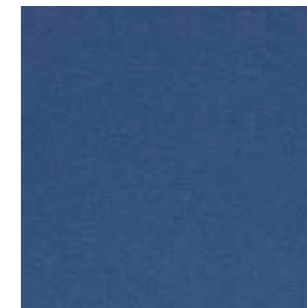
G 167



G 159



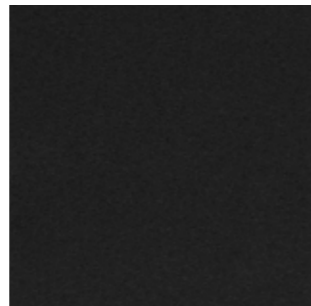
G 166



G 168



G 169



Collection / Collezione

**. kvadrat**

**HERO HEATHER**  
from G250 to G258

**DESIGNER** Patricia Urquiola

G 250



G 251



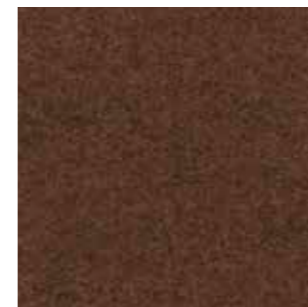
G 252



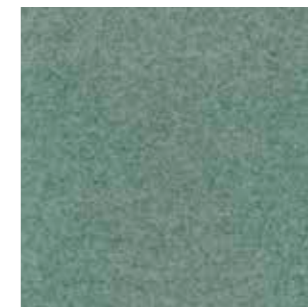
G 253



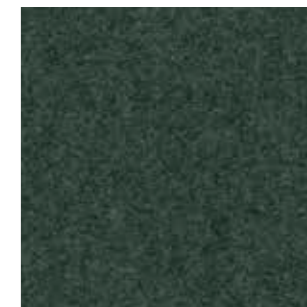
G 254



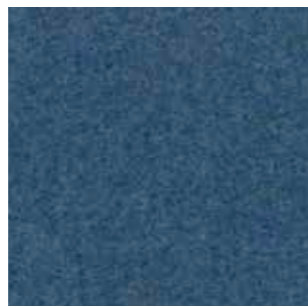
G 255



G 256



G 257









G 258



G 

N 

	<b>G220÷G226</b>	<b>G240÷G244</b>	<b>N01÷N08</b>	<b>N80÷N84</b>
<b>COMPOSITION</b> COMPOSIZIONE	52% Cotton 22% Viscose 14% Acrylic 6% Linen 3% Polyester 3% Nylon	43% Viscose 17% Polyacrylic 15% New wool 9% Cotton 8% Polyester 8% Linen	58% New wool 25% Viscose 8% Linen 5% Nylon 4% Polyester	38% New wool 37% Viscose 16% Linen 9% Nylon
<b>WEIGHT</b> GRAMMATURA	670 g/m <sup>2</sup> (19.80 oz/yd <sup>2</sup> )	720 g/m <sup>2</sup> (21.28 oz/yd <sup>2</sup> )	420 g/m <sup>2</sup> (12.43 oz/yd <sup>2</sup> )	528 g/m <sup>2</sup> (15.57 oz/yd <sup>2</sup> )
<b>ABRASION</b> ABRASIONE	50.000 cycles Martindale (EN ISO 12947)	40.000 cycles Martindale (EN ISO 12947)	50.000 cycles Martindale (EN ISO 12947)	50.000 cycles Martindale (EN ISO 12947)
<b>PILLING</b>	4-5, scale 1-5 (EN ISO 12945)	3, scale 1-5 (EN ISO 12945)	3, scale 1-5 (EN ISO 12945)	3-4, scale 1-5 (EN ISO 12945)
<b>LIGHT FASTNESS</b> SOLIDITÀ ALLA LUCE	5/7, scale 1-8 (ISO 105-B02)	5-6, scale 1-8 (ISO 105-B02)	5, scale 1-8 (ISO 105-B02)	5-7, scale 1-8 (ISO 105-B02)
<b>RUBBING FASTNESS</b> SOLIDITÀ ALLO SFREGAMENTO	Dry and Wet 4-5, scale 1-5 (ISO 105-X12)	Dry and Wet 4-5, scale 1-5 (ISO 105-X12)	Dry 4-5 and Wet 3-4, scale 1-5 (ISO 105-X12)	Dry 4-5 and Wet 3-5, scale 1-5 (ISO 105-X12)
<b>FLAME RESISTANCE</b> RESISTENZA AL FUOCO	AS/NZS 3837 Class 2 BS 5852 Part 1 EN 1021 – 1/2 IMO FTP Code 2010: Part 8 US CA TB 117-2013 - Compliant to the criteria certifying the absence of flame retardant chemicals (AB 2998)	AS/NZS 3837 Class 2 BS 5852 Part 1 EN 1021 – 1/2 IMO FTP Code 2010: Part 8 US CA TB 117-2013 - Compliant to the criteria certifying the absence of flame retardant chemicals (AB 2998)	AS/NZS 1530.3 AS/NZS 3837 Class 2 ASTM E84 Class A Adhered ASTM E84 Class B Unadhered EN 1021 – 1/2 EN 13501, C-s1, d0, with treatment IMO FTP Code 2010: Part 8 with treatment NFFPA 260 US CA TB 117-2013 - Compliant to the criteria certifying the absence of flame retardant chemicals (AB 2998)	AS/NZS 3837 Class 2 BS 5852 Part 1 EN 1021 – 1/2 UNI 9175 Classe 1 IM BS 7176 Low Hazard US CA TB 117-2013 - Compliant to the criteria certifying the absence of flame retardant chemicals (AB 2998)
<b>APPROVED</b> OMOLOGATO	 		  	
<b>CLEANING</b> LAVAGGIO				



# G

Collection / Collezione

• **kvadrat** - SAHCO

**MOSS**

from G220 to G226

DESIGNER Vincent Van Duysen

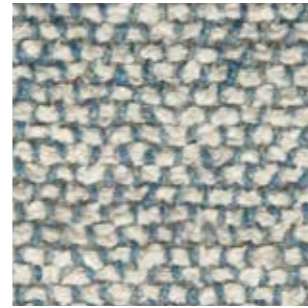
G 225



G 220



G 221



G 222



G 223



G 224



G 226



Collection / Collezione

• **kvadrat** - SAHCO

**SAFIRE**

from G240 to G244

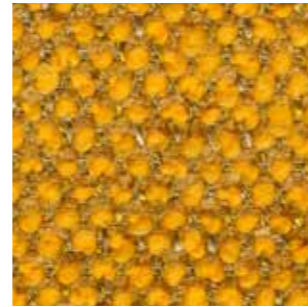
G 240



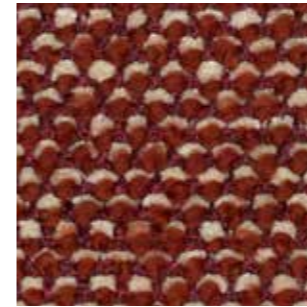
G 241



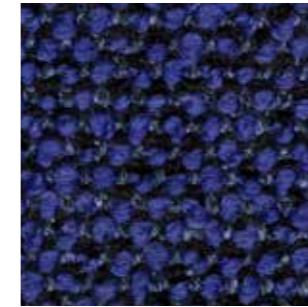
G 242



G 243



G 244



# N

Collection / Collezione

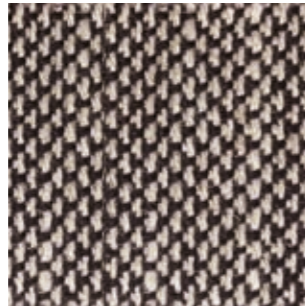
• **kvadrat**

**SUNNIVA**

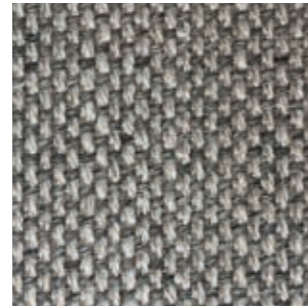
from N01 to N08

DESIGNERS Raf Simons & Fanny Aronsen

N 05



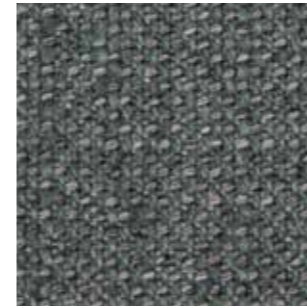
N 01



N 08



N 02



N 06



N 07



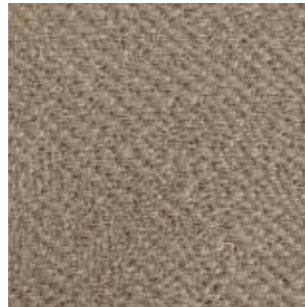
Collection / Collezione

• **kvadrat** - SAHCO

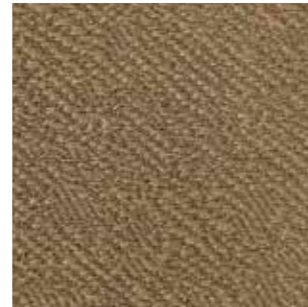
**KEIGA**

from N80 to N84

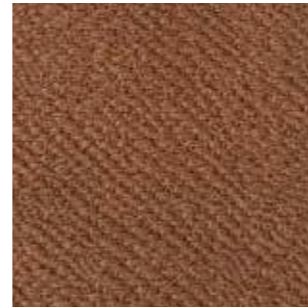
N 80



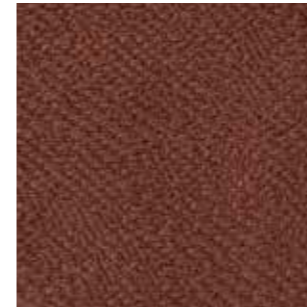
N 81



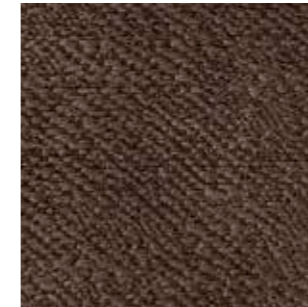
N 82



N 83



N 84





	<b>C110÷C122</b>	<b>C36÷C39</b>	<b>G150÷G156</b>	<b>G130÷G133</b>
<b>COMPOSITION</b> COMPOSIZIONE	85% Wool 15% Polyamide	94% Cotton 6% Polyamide	82% Wool 12% Rami 6% Polyamide	95% Virgin Wool 5% Polyamide
<b>WEIGHT</b> GRAMMATURA	330 g/m <sup>2</sup> (9.73 oz/yd <sup>2</sup> )	480 g/m <sup>2</sup> (14.16 oz/yd <sup>2</sup> )	570 g/m <sup>2</sup> (16.81 oz/yd <sup>2</sup> )	660 g/m <sup>2</sup> (19.47 oz/yd <sup>2</sup> )
<b>ABRASION</b> ABRASIONE	100.000 cycles Martindale (EN ISO 12947-2)	40.000 cycles, Martindale (EN ISO 12947-2)	100.000 cycles Martindale (EN ISO 12947-2)	52.000 cycles Martindale (EN ISO 12947-2)
<b>RUBBING FASTNESS</b> SOLIDITÀ ALLO SFREGAMENTO	Dry 4 and Wet 3-4, scale 1-5 (ISO 105-X12)	Dry 4-5 and Wet 2-3, scale 1-5 (ISO 105-X12)	Dry 4 and Wet 3-4, scale 1-5 (ISO 105-X12)	/
<b>PILLING</b>	/	4, scale 1-5 (EN ISO 12945-2 to 5.000 rubs)	/	4-5, scale 1-5 (EN ISO 12945-2)
<b>LIGHT FASTNESS</b> SOLIDITÀ ALLA LUCE	5-7, scale 1-8 (ISO 105-B02)	4-5, scale 1-8 (ISO 105-B02)	5-7, scale 1-8 (ISO 105-B02)	5-8, scale 1-8 (ISO 105-B02)
<b>SOUND ABSORPTION</b> ASSORBIMENTO ACUSTICO	/	/	/	folded: $\alpha_v=0.85$ Class B (ISO 11654)
<b>FLAME RESISTANCE</b> RESISTENZA AL FUOCO	BS 5852 Crib 5 EN 1021 – 1/2 IMO FTP Code 2010: Part 8 UNI 9175 Classe 1 IM US CA TB 117-2013 - Compliant to the criteria certifying the absence of flame retardant chemicals (AB 2998)	/	BS 5852 Crib 5 EN 1021 – 1/2 IMO FTP Code 2010: Part 8 UNI 9175 Classe 1 IM US CA TB 117-2013 - Compliant to the criteria certifying the absence of flame retardant chemicals (AB 2998)	BS 5852 Part 1 BS 5852 Crib 5 with treatment DIN 4102-1 B2 EN 1021 – 1/2 EN 13501-1 FAR 25.853 (12 sec. vertical) IMO: 2014/90/EU (MED) UNI 9175 Classe 1 IM US CA TB 117-2013 - Compliant to the criteria certifying the absence of flame retardant chemicals (AB 2998)
<b>APPROVED</b> OMOLOGATO	 	/		
<b>CLEANING</b> LAVAGGIO				



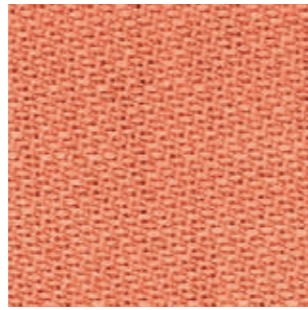
# C

Collection / Collezione

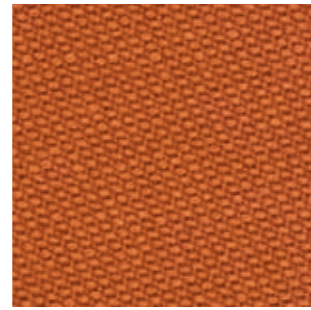
• **svensson**

**SEMI**  
from C110 to C122

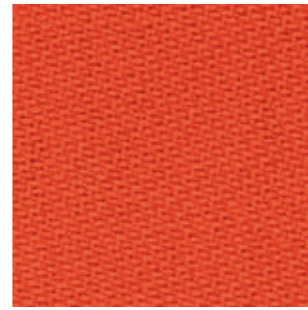
C 111



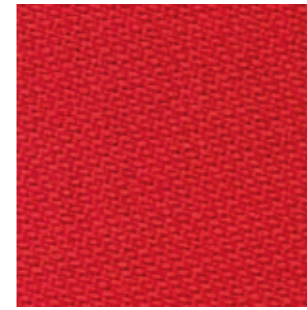
C 112



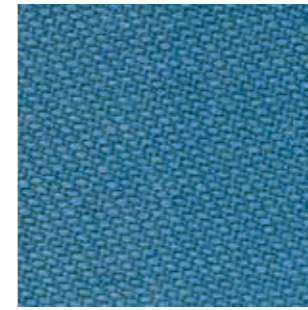
C 110



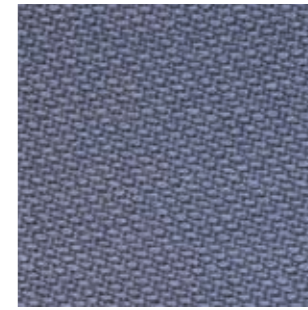
C 113



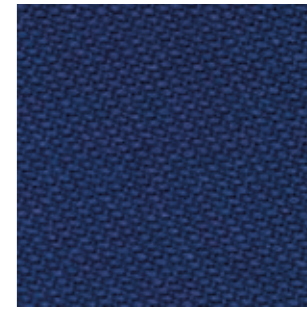
C 120



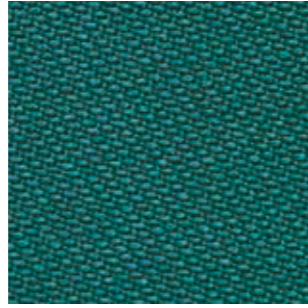
C 121



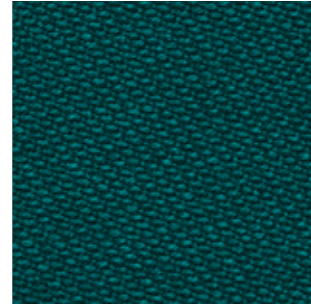
C 122



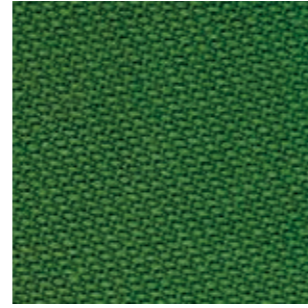
C 118



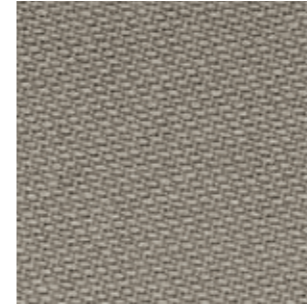
C 119



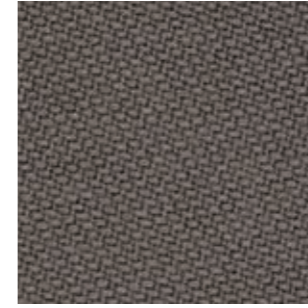
C 117



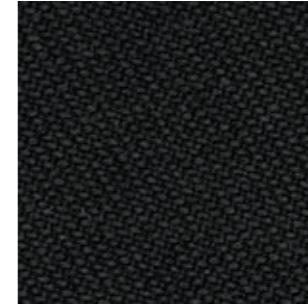
C 114



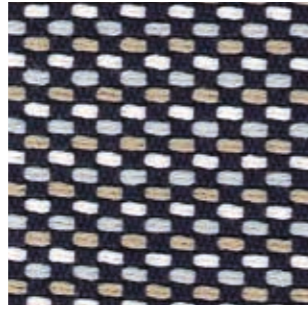
C 115



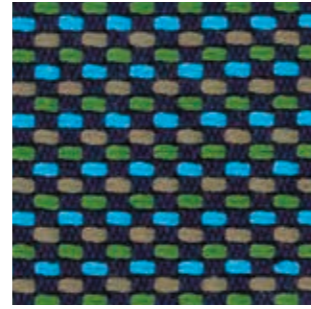
C 116



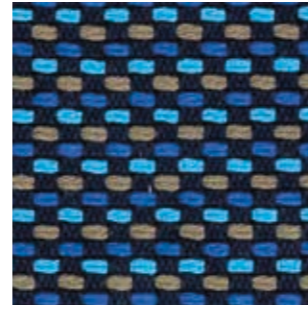
C 37



C 38



C 39



C 36



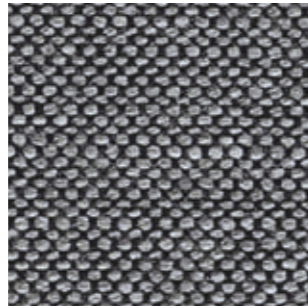
# G

Collection / Collezione

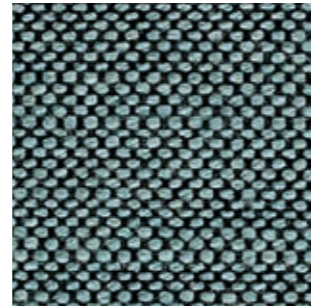
• **svensson**

**BALANCE**  
from G150 to G156

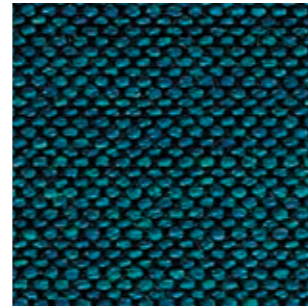
G 151



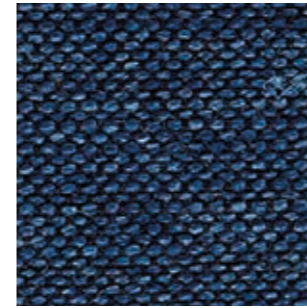
G 154



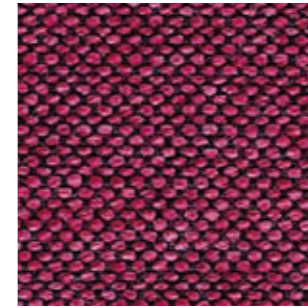
G 155



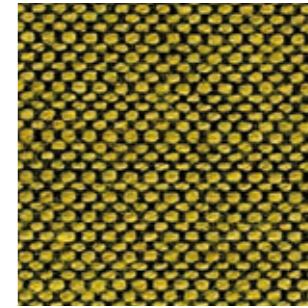
G 156



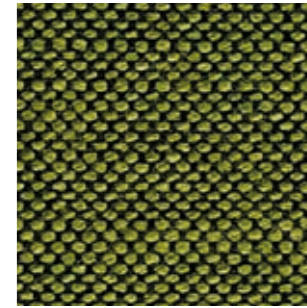
G 150



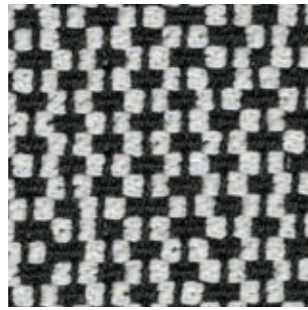
G 152



G 153



G 130



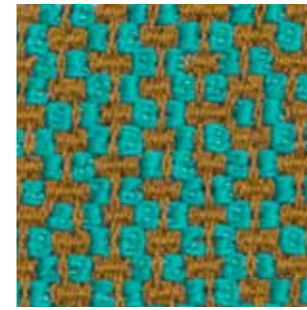
G 133



G 132



G 131

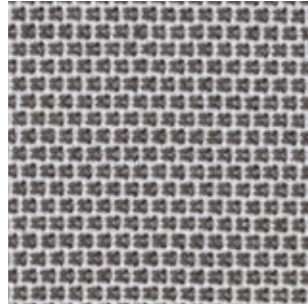


	C 	D 	G 
	<b>C83÷C89   C100, C101</b>	<b>D40÷D44</b>	<b>G170÷G176   G210÷G213</b>
<b>COMPOSITION</b> COMPOSIZIONE	54% New Zealand Wool 44% Post-consumer recycled polyester 2% Polyamide	88% New Zealand Wool 12% Polyamide	96% Virgin Wool 4% Polyamide
<b>WEIGHT</b> GRAMMATURA	305 g/m <sup>2</sup> (9.06 oz/yd <sup>2</sup> )	420 g/m <sup>2</sup> (12.43 oz/yd <sup>2</sup> )	660 g/m <sup>2</sup> (13.90 oz/yd <sup>2</sup> )
<b>ABRASION</b> ABRASIONE	100.000 cycles Martindale (EN ISO 12947-2)	100.000 cycles Martindale (EN ISO 12947-2)	90.000 cycles Martindale (EN ISO 12947-2)
<b>RUBBING FASTNESS</b> SOLIDITÀ ALLO SFREGAMENTO	Dry and Wet 4-5, scale 1-5 (ISO 105-X12)	Dry and Wet 4-5, scale 1-5 (ISO 105-X12)	/
<b>PILLING</b>	4-5, scale 1-5 (EN ISO 12945-2)	4-5, scale 1-5 (EN ISO 12945-2)	4-5, scale 1-5 (EN ISO 12945-2)
<b>LIGHT FASTNESS</b> SOLIDITÀ ALLA LUCE	5-7, scale 1-8 (ISO 105-B02)	5-7, scale 1-8 (ISO 105-B02)	5, scale 1-8 (ISO 105-B02)
<b>SOUND ABSORPTION</b> ASSORBIMENTO ACUSTICO	/	/	folded: $\alpha_w=0.95$ Class A (ISO 11654)
<b>FLAME RESISTANCE</b> RESISTENZA AL FUOCO	EN 1021 – 1/2 EN 1021-1 ÖNORM A3800-1 US CA TB 117-2013 - Compliant to the criteria certifying the absence of flame retardant chemicals (AB 2998)	ASTM E84 Class 2 EN 1021 – 1/2 BS 5852 Part 1 0, 1 NF D60-013 UNI 9175 Classe 1 IM US CA TB 117-2013 - Compliant to the criteria certifying the absence of flame retardant chemicals (AB 2998)	BS 5852 Part 1 DIN 4102-1 B2 with treatment EN 13501-1 with treatment EN 1021 – 1/2 FAR 25.853 (12 sec. vertical) with treatment IMO: 2014/90/EU (MED) UNI 9175 Classe 1 IM US CA TB 117-2013 - Compliant to the criteria certifying the absence of flame retardant chemicals (AB 2998)
<b>APPROVED</b> OMOLOGATO			
<b>CLEANING</b> LAVAGGIO			

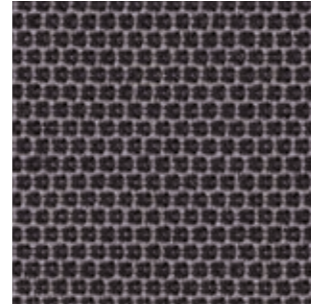


# C

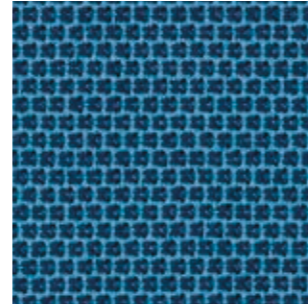
C 101



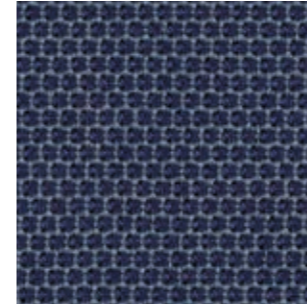
C 86



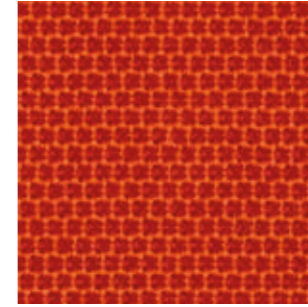
C 83



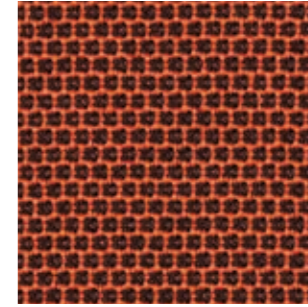
C 100



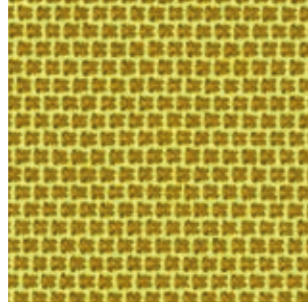
C 85



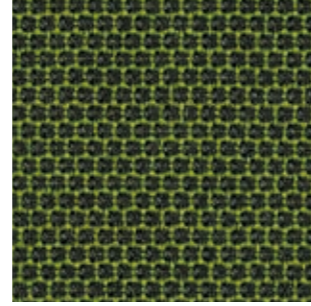
C 89



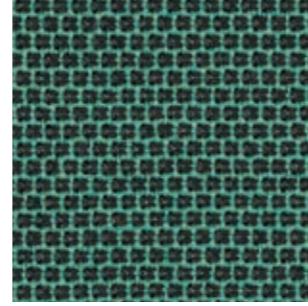
C 87



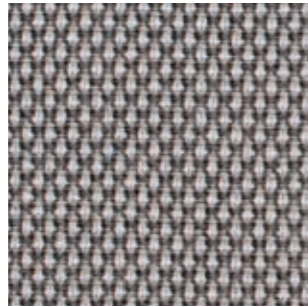
C 84



C 88



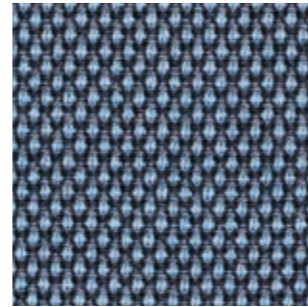
D 40



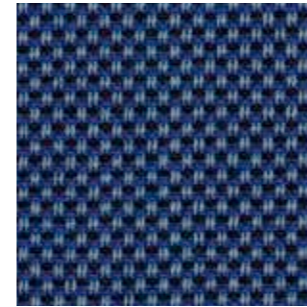
D 41



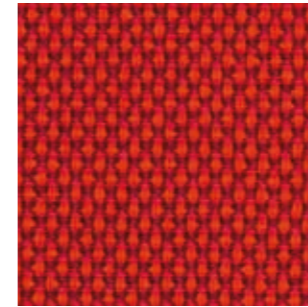
D 43



D 44

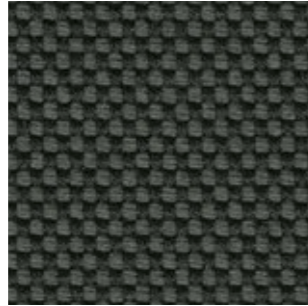


D 42

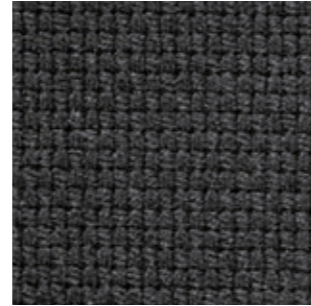


# D

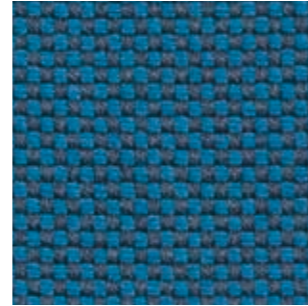
G 175



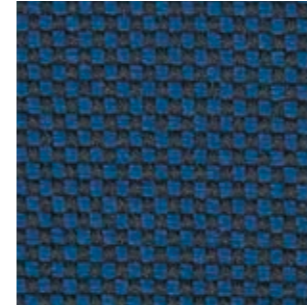
G 176



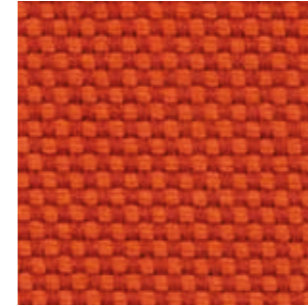
G 173



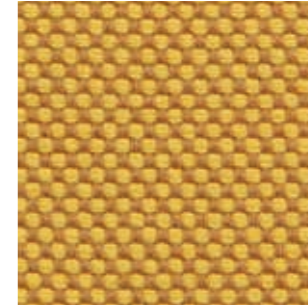
G 174



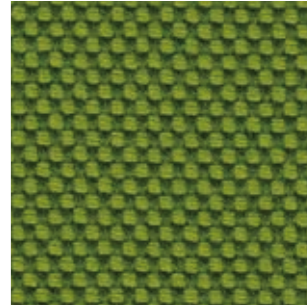
G 170



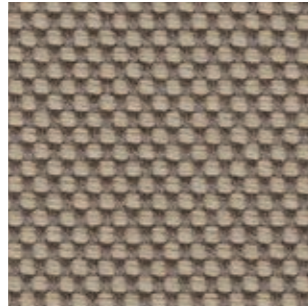
G 171



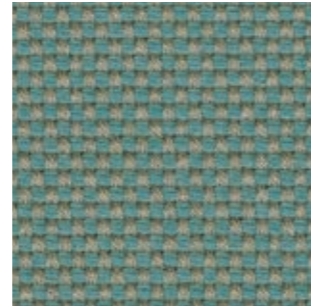
G 172



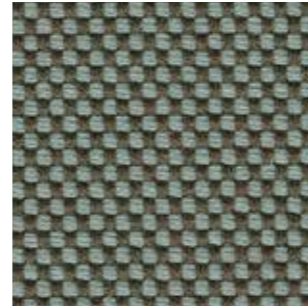
G 211



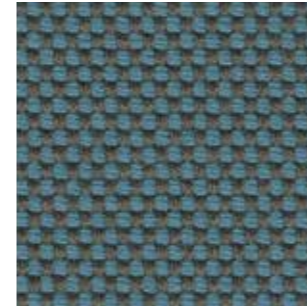
G 210



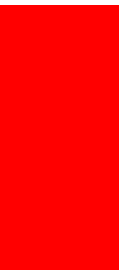
G 213



G 212



# G



G 

H 

C 

**G200÷G206**

**G140÷G146**

**H120÷H127**

**C210÷C217**

<b>COMPOSITION</b> COMPOSIZIONE	92% New wool 8% Nylon	45% Recycled wool 45% New wool 10% Nylon	90% New wool 10% Nylon	100% TREVIRA CS®
<b>WEIGHT</b> GRAMMATURA	370 g/m <sup>2</sup> (10.95 oz/yd <sup>2</sup> )	385 g/m <sup>2</sup> (11.38 oz/yd <sup>2</sup> )	300 g/m <sup>2</sup> (8.85 oz/yd <sup>2</sup> )	320 g/m <sup>2</sup> (9.48 oz/yd <sup>2</sup> )
<b>ABRASION</b> ABRASIONE	80.000 cycles Martindale (EN ISO 12947)	100.000 cycles Martindale (EN ISO 12947)	100.000 cycles Martindale (EN ISO 12947)	80.000 cycles Martindale (EN ISO 12947)
<b>RUBBING FASTNESS</b> SOLIDITÀ ALLO SFREGAMENTO	Dry and Wet 5, scale 1-5 (ISO 105-X12)	Dry and Wet 4-5, G140-G142-G144: Dry 4-5 and Wet 4 scale 1-5 (ISO 105-X12)	Dry 4-5 and Wet 4, scale 1-5 (ISO 105-X12)	Dry and Wet 5, scale 1-5 (ISO 105-X12)
<b>PILLING</b>	4, scale 1-5 (EN ISO 12945)	4, scale 1-5 (EN ISO 12945)	4, scale 1-5 (EN ISO 12945)	4-5, scale 1-5 (EN ISO 12945)
<b>LIGHT FASTNESS</b> SOLIDITÀ ALLA LUCE	6-7, scale 1-8 (ISO 105-B02)	6-7, G140-G142-G144: 6 scale 1-8 (ISO 105-B02)	6, scale 1-8 (ISO 105-B02)	6-7, scale 1-8 (ISO 105-B02)
<b>SOUND ABSORPTION</b> ASSORBIMENTO ACUSTICO	/	folded: $\alpha_w$ = 0.75 Class C (EN ISO 354)	folded: $\alpha_w$ = 0.80 Class B (EN ISO 354)	folded: $\alpha_w$ = 0.70 Class C (EN ISO 354)
<b>FLAME RESISTANCE</b> RESISTENZA AL FUOCO	AS/NZS 1530.3 AS/NZS 3837 Class 2 BS 5852 Part 1 EN 1021 – 1/2 IMO FTP Code 2010: Part 8 NF D60-013 SN 198 898 5.3 with treatment UNI 9175 Classe 1 IM US CA TB 117-2013 - Compliant to the criteria certifying the absence of flame retardant chemicals (AB 2998)	AS/NZS 1530.3 AS/NZS 3837 Class 2 BS 5852 Part 1 EN 1021 – 1/2 EN 13501, B-s2, d0, with treatment IMO FTP Code 2010: Part 8 NF D60-013 SN 198 898 5.3 with treatment ONORM B1/Q1 UNI 9175 Classe 1 IM US CA TB 117-2013 - Compliant to the criteria certifying the absence of flame retardant chemicals (AB 2998) only for G141-G143-G145-G146: ASTM E84 Class A Unadhered	AS/NZS 1530.3 AS/NZS 3837 Class 2 ASTM E84 Class A Adhered ASTM E84 Class A Unadhered BS 5852 Part 1 EN 1021 – 1/2 EN 13501, B-s2, d0, with treatment GB 50222 B1 with treatment IMO FTP Code 2010: Part 7 with treatment IMO FTP Code 2010: Part 8 NF D60-013 NFPA 260 ONORM B1/Q1 SN 198 898 5.3 with treatment UNI 9175 Classe 1 IM US CA TB 117-2013 - Compliant to the criteria certifying the absence of flame retardant chemicals (AB 2998)	AS/NZS 1530.3 AS/NZS 3837 Class 2 ASTM E84 Class B Adhered ASTM E84 Class A Unadhered BS 5852 Crib 5 BS 5852 Part 1 with treatment BS 5867 Part 2 type B DIN 4102 B1 EN 1021 – 1/2 EN 13501-1, B-s1, d0 GB 8624 B1 FAR 25.853 IMO FTP Code 2010: Part 8 IMO FTP Code 2010: Part 5 NF D60-013 NF P92 507 M1 NFPA 701 ONORM B1/Q1 CAN ULC S102 S109 SN 198 898 5.2 UNI 9177 Classe 1 UNI 9175 Classe 1 IM US CA TB 117-2013

**APPROVED**  
OMOLOGATO



PRODUCT CERTIFIED  
FOR LOW CHEMICAL  
EMISSIONS:  
UL.COM/CGG  
UL 2818  
170166-420

**CLEANING**  
LAVAGGIO



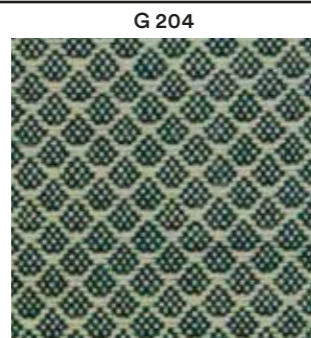


Collection / Collezione

**. kvadrat**

JAALI  
from G200 to G206

DESIGNER Doshi Levien

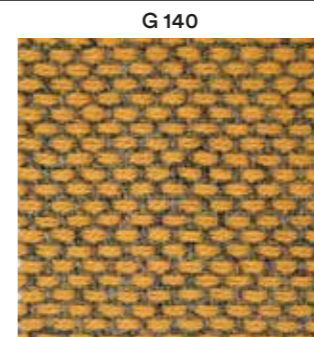
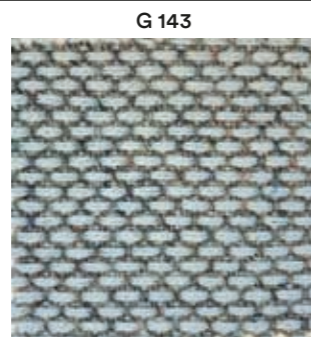


Collection / Collezione

**. kvadrat**

RE-WOOL  
from G140 to G146

DESIGNER Margrethe Odgaard

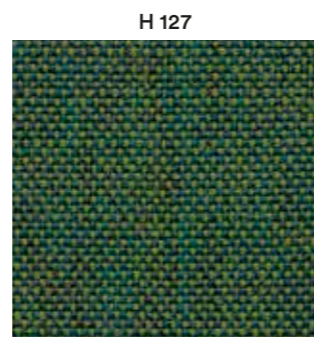
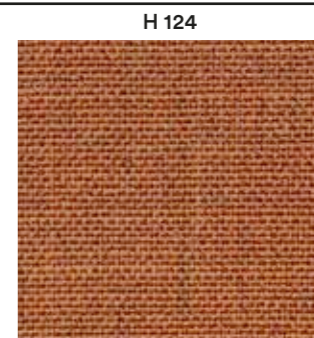
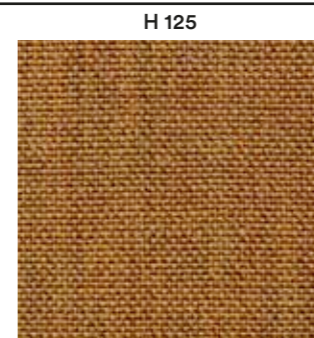
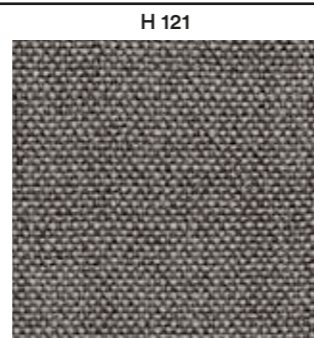
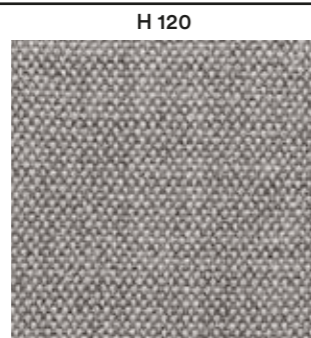


Collection / Collezione

**. kvadrat**

REMIX  
from H120 to H127

DESIGNER Giulio Ridolfo

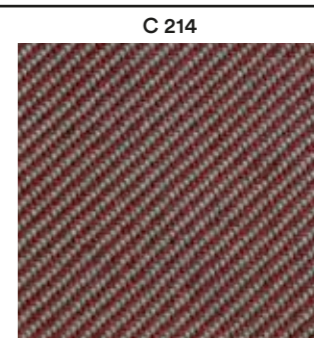
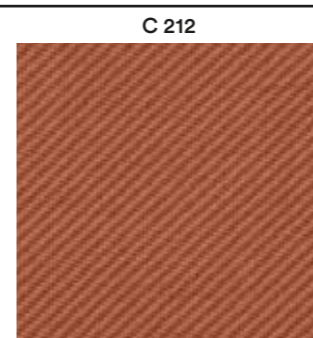
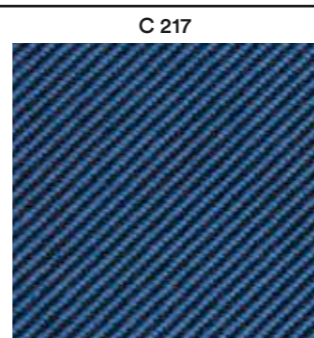
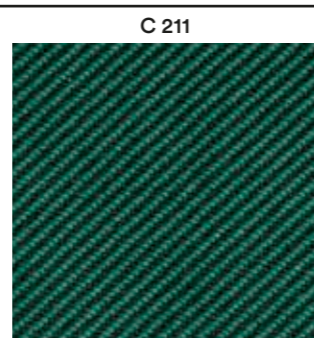
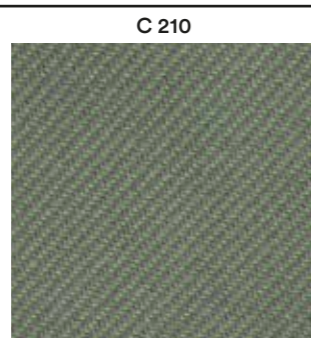


Collection / Collezione

**. kvadrat**

RELATE  
from C210 to C217




DESIGNER Patricia Urquiola



D

H

N **D120÷D123****H140÷H143****N30÷N39, N50, N51****N60÷N65**

<b>COMPOSITION</b> COMPOSIZIONE	22% Acrylic 22% Virgin Wool 22% Polyester 14% Viscose 13% Cotton 7% Linen	35% Wool 35% Acrylic 23% Polyester 7% Cotton	65% Wool 32% Cotton 3% Polyamide	98% New Wool 2% Nylon
<b>WEIGHT</b> GRAMMATURA	580 g/m <sup>2</sup> (17.11 oz/yd <sup>2</sup> )	414 g/m <sup>2</sup> (12.21 oz/yd <sup>2</sup> )	750 g/m <sup>2</sup> (22.16 oz/yd <sup>2</sup> )	605 g/m <sup>2</sup> (17.91 oz/yd <sup>2</sup> )
<b>ABRASION</b> ABRASIONE	30.000 cycles Martindale (EN ISO 12947-2)	40.000 cycles Martindale (EN ISO 12947-2)	80.000 cycles Martindale (EN ISO 12947-2)	45.000 cycles Martindale (EN ISO 12947)
<b>PILLING</b>	4, scale 1-5 (EN ISO 12945-2 to 5.000 rubs)	3-4, scale 1-5 (EN ISO 12945-2 to 5.000 rubs)	4-5, scale 1-5 (EN ISO 12945 to 5.000 rubs)	3-4, scale 1-5 (EN ISO 12945)
<b>RUBBING FASTNESS</b> SOLIDITÀ ALLO SFREGAMENTO	Dry 4-5 and Wet 3, scale 1-5 (ISO 105-X12)	Dry 4-5 and Wet 3, scale 1-5 (ISO 105-X12)	Dry 4-5 and Wet 3-4, scale 1-5 (ISO 105-X12)	Dry and Wet 4-5, scale 1-5 (ISO 105-X12)
<b>LIGHT FASTNESS</b> SOLIDITÀ ALLA LUCE	5-6, scale 1-8 (ISO 105-B02)	5-6, scale 1-8 (ISO 105-B02)	4-5, scale 1-8 (ISO 105-B02)	7, scale 1-8 (ISO 105-B02)
<b>FLAME RESISTANCE</b> RESISTENZA AL FUOCO	BS 5852 Part 1 US CA TB 117-2013 - Compliant to the criteria certifying the absence of flame retardant chemicals (AB 2998)	EN 1021-1 BS 5852 Part 1 US CA TB 117-2013 - Compliant to the criteria certifying the absence of flame retardant chemicals (AB 2998)	BS 5852 Part 1-2 BS 5852 Crib 5 EN 1021 - 1/2 UNI 9175 Classe 1 IM US CA TB 117-2013 - Compliant to the criteria certifying the absence of flame retardant chemicals (AB 2998)	NF D60-013 EN 1021 - 1/2 ASTM E84 Class B Adhered ASTM E84 Class B Unadhered IMO FTP Code 2010: Part 8 ÖNORM B2/Q1 BS 5852 Part 1 AS/NZS 3837 Class 2 SN 198 898 5,3 with treatment UNI 9175 Classe 1 IM US CA TB 117-2013
<b>APPROVED</b> OMOLOGATO	/	/		 <small>PRODUCT CERTIFIED FOR LOW CHEMICAL EMISSIONS: UL COMF55 UL 2818 170168-420</small>
<b>CLEANING</b> LAVAGGIO				

# D

D 120



D 121



D 122



D 123



# H

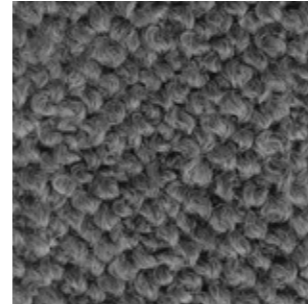
H 143



H 140



H 141



H 142



# N

Collection / Collezione  
• **DEDAR**  
A PERFECT FLOWER  
from N30 to N39, N50, N51

N 30



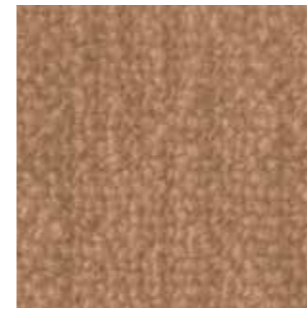
N 31



N 32



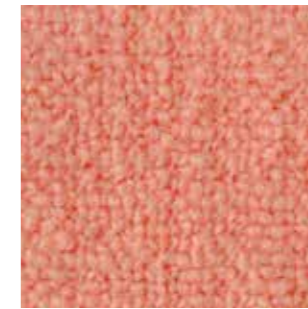
N 51



N 33



N 34



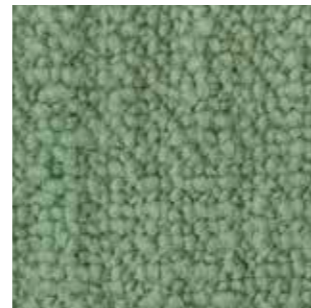
N 39



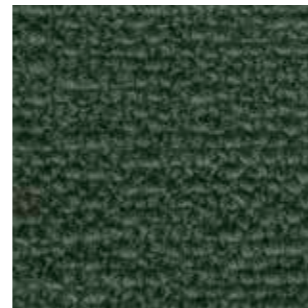
N 35



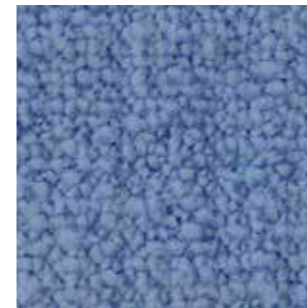
N 36



N 50



N 37



N 38



Collection / Collezione  
• **kvadrat**  
SERPENTINE  
from N60 to N65  
DESIGNERS Giulio Ridolfo

N 60



N 61



N 62



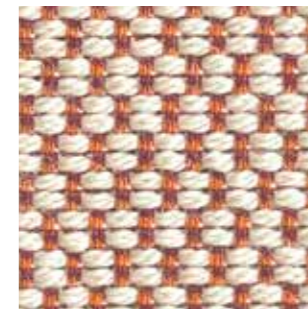
N 63



N 64



N 65



only for outdoor collections cushions / solo per cuscini delle collezioni outdoor

	D 	H 	N 		
	D80÷D91	D130÷D133	D100÷D105	H150, H151	N40÷N45
<b>COMPOSITION</b> COMPOSIZIONE	100% Acrylic	100% Polypropylene	100% Polypropylene	84% Polypropylene 16% Polyester	100% Acrylic
<b>WEIGHT</b> GRAMMATURA	290 g/m <sup>2</sup> (8.55 oz/yd <sup>2</sup> )	470 g/m <sup>2</sup> (13.86 oz/yd <sup>2</sup> )	430 g/m <sup>2</sup> (12.68 oz/yd <sup>2</sup> )	385 g/m <sup>2</sup> (11.35 oz/yd <sup>2</sup> )	390 g/m <sup>2</sup> (11.59 oz/yd <sup>2</sup> )
<b>ABRASION</b> ABRASIONE	> 20.000 cycles, Martindale (EN ISO 5470-2)	40.000 cycles, Martindale (EN ISO 12947-2)	50.000 cycles, Martindale (EN ISO 12947-2)	30.000 cycles, Martindale (EN ISO 12947-2)	24.000 cycles, Martindale (EN ISO 12947-2)
<b>RUBBING FASTNESS</b> SOLIDITÀ ALLO SFREGAMENTO	/	Dry 4-5 and Wet 4, scale 1-5 (ISO 105-X12)	Dry and Wet 4-5, scale 1-5 (ISO 105-X12)	Dry 4-5 and Wet 4, scale 1-5 (ISO 105-X12)	Dry and Wet 4-5, scale 1-5 (ISO 105-X12)
<b>PILLING</b>	/	4-5, scale 1-5 (EN ISO 12945-2 to 5.000 rubs)	4-5, scale 1-5 (EN ISO 12945-2)	4-5, scale 1-5 (EN ISO 12945-2 to 5.000 rubs)	3-4, scale 1-5 (EN ISO 12945 to 5.000 rubs)
<b>LIGHT FASTNESS</b> SOLIDITÀ ALLA LUCE	8, scale 1-8 (ISO 105-B04)	7-8, scale 1-8 (ISO 105-B02)	7, scale 1-8 (ISO 105-B02)	7-8, scale 1-8 (ISO 105-B02)	6-7, scale 1-8 (ISO 105-B02)
<b>WATER FASTNESS</b> SOLIDITÀ ALL'ACQUA	8, scale 1-8 (ISO 105-B04)	7, scale 1-8 (ISO 105-B04)	>7, scale 1-8 (ISO 105-B04)	4-5, scale 1-5 (ISO 105-E02) 4, scale 1-5 (ISO 105-E03)	7-8, scale 1-8 (ISO 105-B04)
<b>FLAME RESISTANCE</b> RESISTENZA AL FUOCO	/	BS 5852 Part 1 US CA TB 117-2013 - Compliant to the criteria certifying the absence of flame retardant chemicals (AB 2998)	US CA TB 117-2013 - Compliant to the criteria certifying the absence of flame retardant chemicals (AB 2998)	BS 5852 Part 0 EN 1021 — 1	US CA TB 117-2013 - Compliant to the criteria certifying the absence of flame retardant chemicals (AB 2998)
<b>APPROVED</b> OMOLOGATO					
<b>CLEANING</b> LAVAGGIO					

only for outdoor collections cushions / solo per cuscini delle collezioni outdoor



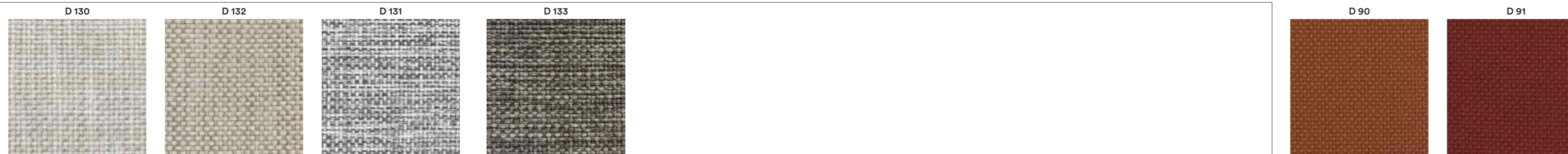
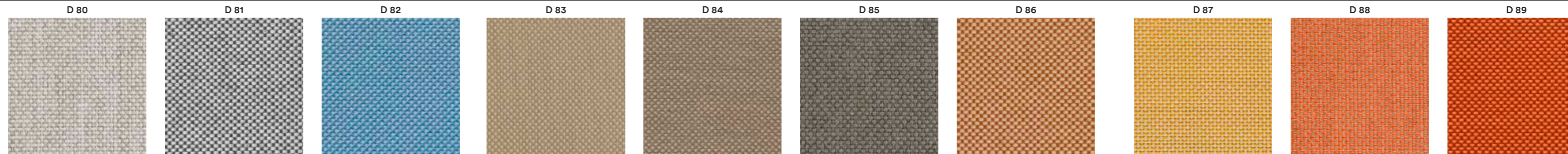
# D

Collection / Collezione

• **PEDRALI**

**FLORIDA**

from D80 to D91



Collection / Collezione

• **PEDRALI**

**ZEFIRO**

from D100 to D105

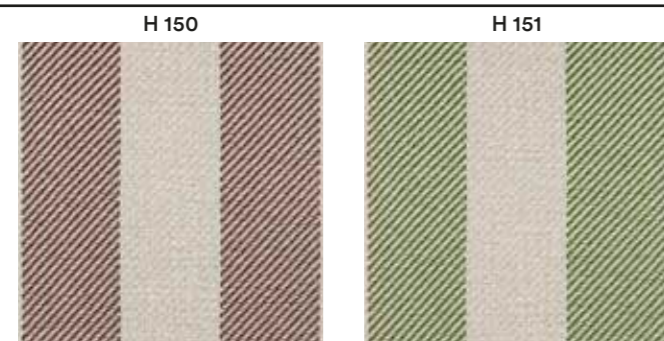


# H

Collection / Collezione

• **PEDRALI**

from H150 to H151



only for the cushions of the items / solo per cuscini degli articoli



Nolita  
3650.3  
3657.3  
3659.3  
3654.7



Babila Twist  
2795



Guinea  
3695  
3675.8  
3694  
3694.5



Lamorisse  
3684



Plus  
630.3



Plus Air  
631.3  
636.3



Rail  
RAIL.23



Reva  
REVA\_L.3



Reva  
REVA\_L.3



accessory cushions  
3001  
3002  
3004  
3005



# N

Collection / Collezione

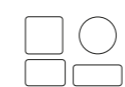
• **DEDAR**

**STRANGE LOVES**

from N40 to N45



only for the cushions of the items / solo per cuscini degli articoli



accessory cushions  
3001  
3002  
3004  
3005

only for outdoor collections cushions / solo per cuscini delle collezioni outdoor



	D140÷D145	D22÷D28	D150÷D155	D110÷D115	G270÷G272	G260÷G263
<b>COMPOSITION</b> COMPOSIZIONE	100% Polypropylene	100% Polypropylene	100% Polypropylene	88% Polypropylene 12% Polyester	100% Polypropylene	100% Polyester
<b>WEIGHT</b> GRAMMATURA	520 g/m <sup>2</sup> (15.34 oz/yd <sup>2</sup> )	614 g/m <sup>2</sup> (18.11 oz/yd <sup>2</sup> )	458 g/m <sup>2</sup> (13.51 oz/yd <sup>2</sup> )	470 g/m <sup>2</sup> (13.86 oz/yd <sup>2</sup> )	392 g/m <sup>2</sup> (11.56 oz/yd <sup>2</sup> )	592 g/m <sup>2</sup> (17.46 oz/yd <sup>2</sup> )
<b>ABRASION</b> ABRASIONE	62.000 cycles, Martindale (EN ISO 13936-2)	> 30.000 cycles, Martindale (EN ISO 12947-2)	35.000 cycles, Martindale (EN ISO 12947-2)	30.000 cycles, Martindale (EN ISO 12947-2)	28.000 cycles, Martindale (EN ISO 12947-2)	26.000 cycles, Martindale (EN ISO 12947-2)
<b>RUBBING FASTNESS</b> SOLIDITÀ ALLO SFREGAMENTO	Dry and Wet 4-5, scale 1-5 (ISO 105-X12)	Dry and Wet 4-5, scale 1-5 (ISO 105-X12)	Dry and Wet 5, scale 1-5 (ISO 105-X12)	Dry 4-5 and Wet 4, scale 1-5 (ISO 105-X12)	Dry and Wet 4-5, scale 1-5 (ISO 105-X12)	Dry 4-5 and Wet 5, scale 1-5 (ISO 105-X12)
<b>PILLING</b>	4-5, scale 1-5 (EN ISO 12945-2 to 5.000 rubs)	5, scale 1-5 (EN ISO 12945-2 to 5.000 rubs)	5, scale 1-5 (EN ISO 12945-2)	4, scale 1-5 (EN ISO 12945-2 to 5.000 rubs)	5, scale 1-5 (EN ISO 12945-2)	4-5, scale 1-5 (EN ISO 12945-2)
<b>LIGHT FASTNESS</b> SOLIDITÀ ALLA LUCE	7, scale 1-8 (ISO 105-B02)	7, scale 1-8 (ISO 105-B02)	7, scale 1-8 (ISO 105-B02)	7-8, scale 1-8 (ISO 105-B02)	7, scale 1-8 (ISO 105-B02)	7-8, scale 1-8 (ISO 105-B02)
<b>WATER FASTNESS</b> SOLIDITÀ ALL'ACQUA	7, scale 1-8 (ISO 105-B04)	5, scale 1-5 (ISO 105-E01)	8, scale 1-8 (ISO 105-B04)	7, scale 1-8 (ISO 105-B04)	4-5, scale 1-5 (ISO 105-E03) 5, scale 1-5 (ISO 105-E02)	4-5, scale 1-5 (ISO 105-E03) (ISO 105-E02)
<b>FLAME RESISTANCE</b> RESISTENZA AL FUOCO	BS 5852 Part 1	BS 5852 Part 1	BS 5852 Part 0	BS 5852 Part 0	BS 5852 Part 0	BS 5852 Part 1-2 BS 5852 Crib 5 DIN 4102 B1 NFP92-503-504-505 M
	US CA TB 117-2013 - Compliant to the criteria certifying the absence of flame retardant chemicals (AB 2998)					
<b>APPROVED</b> OMOLOGATO	/			<small>PRODUCT CERTIFIED FOR LOW-CHEMICAL EMISSIONS UL COM/IGG UL 2919 170166-420</small>	/	<small>PRODUCT CERTIFIED FOR LOW-CHEMICAL EMISSIONS UL COM/IGG UL 2919 170166-420</small>
<b>CLEANING</b> LAVAGGIO						



D

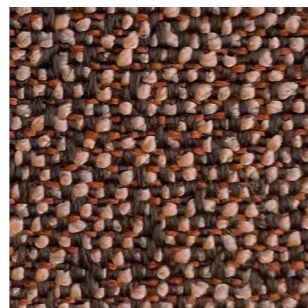
D 140



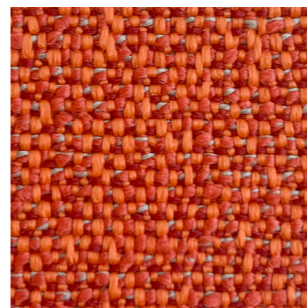
D 141



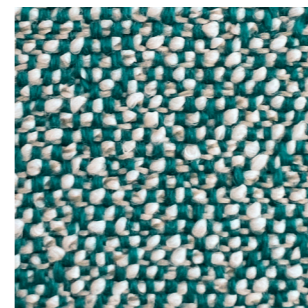
D 142



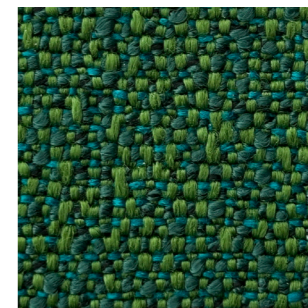
D 143



D 144



D 145



D 151



D 150



D 152



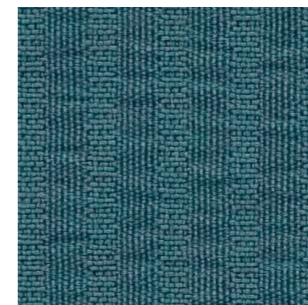
D 153



D 155



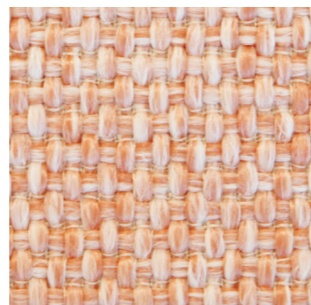
D 154



D 22



D 23



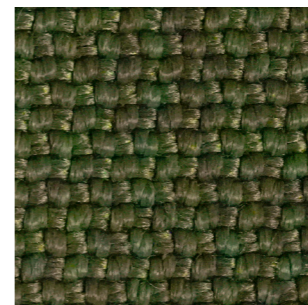
D 24



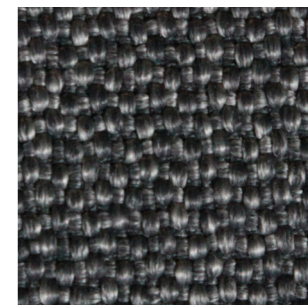
D 27



D 28



D 25



D 26



Collection / Collezione

• **PEDRALI**

BREZZA

from D22 to D28

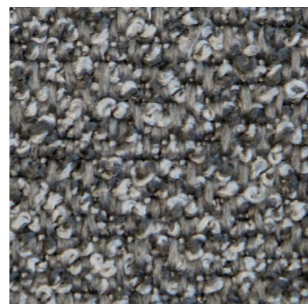
D 110



D 111



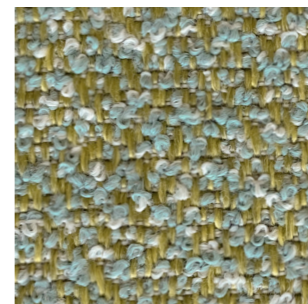
D 112



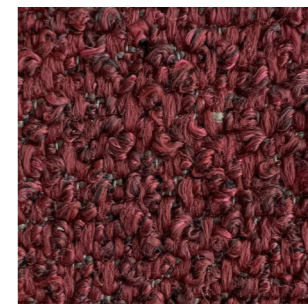
D 113



D 114



D 115



Collection / Collezione

• **PEDRALI**

SAND

from D110 to D115



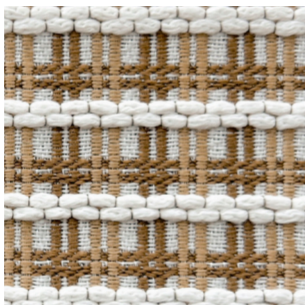
G

Collection / Collezione

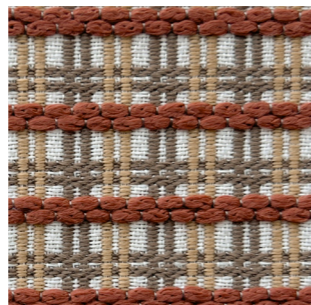
• **RUBELLI**

CAIPIRINHA from G270 to G272

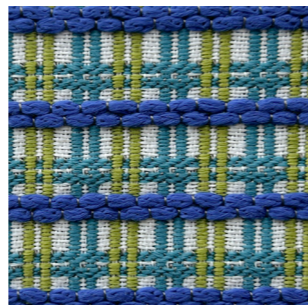
G 270



G 271



G 272



UNDERWOOD from G260 to G263

G 263



DESIGNER FormaFantasma

G 260








G 261



G 262





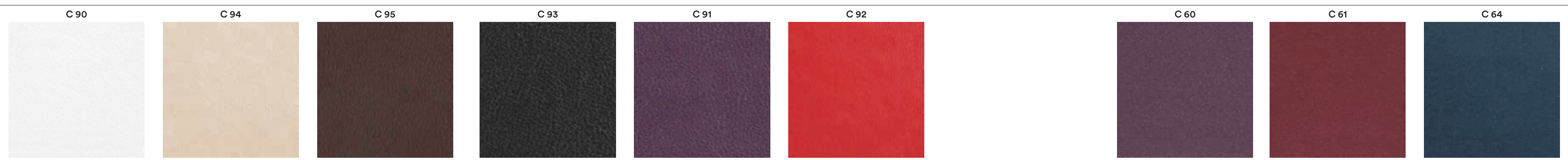
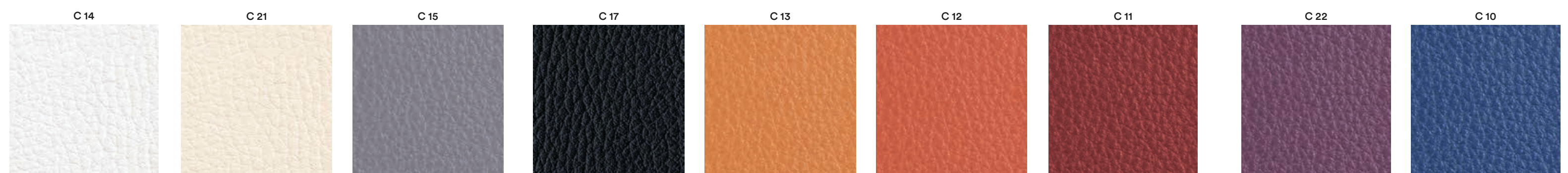
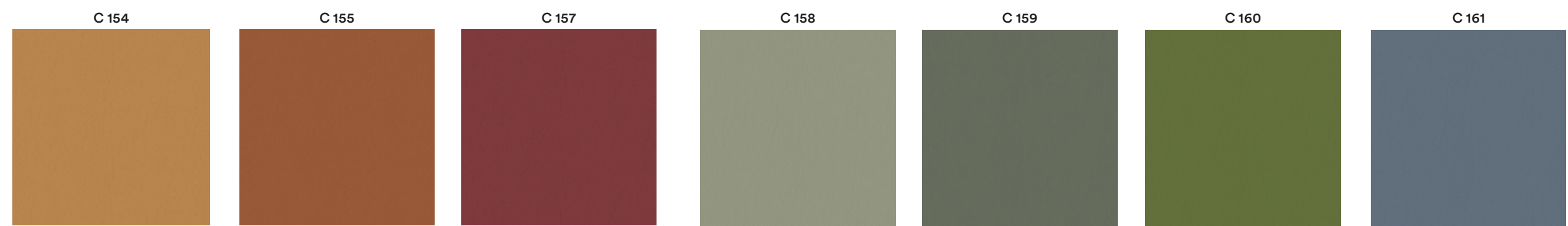
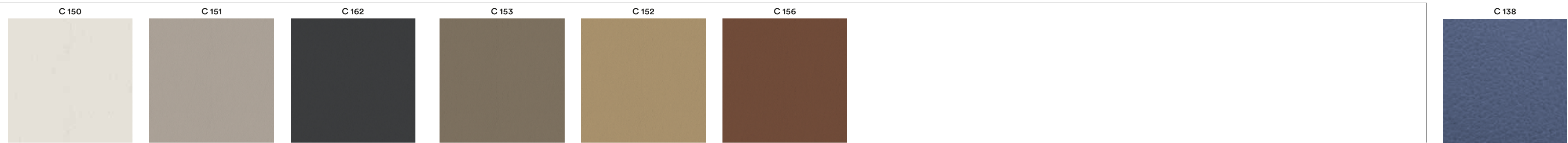
	C130+C141	C150+C162	C10+C22	C90+C95   C60+C64
<b>COMPOSITION</b> COMPOSIZIONE	76% PVC 22% Polyester 2% Polyurethane	80% PVC 20% Polyester	85% PVC 15% Cotton	72% PVC 25% Cotton 3% Polyurethane
<b>WEIGHT</b> GRAMMATURA	540 g/m <sup>2</sup> (15.93 oz/yd <sup>2</sup> )	635 g/m <sup>2</sup> (18.72 oz/yd <sup>2</sup> )	830 g/m <sup>2</sup> (24.48 oz/yd <sup>2</sup> )	600 g/m <sup>2</sup> (17.70 oz/yd <sup>2</sup> )
<b>ABRASION</b> ABRASIONE	60.000 cycles Martindale (EN ISO 5470-2)	300.000 cycles Martindale (EN ISO 5470-2)	150.000 cycles Martindale (EN ISO 5470-2)	100.000 cycles Martindale (EN ISO 5470-2)
<b>RUBBING FASTNESS</b> SOLIDITÀ ALLO SFREGAMENTO	Dry and Wet 5, scale 1-5 (ISO 105-X12)	Dry and Wet 4-5, scale 1-5 (ISO 105-X12)	/	Dry and Wet 5, scale 1-5 (ISO 105-X12)
<b>LIGHT FASTNESS</b> SOLIDITÀ ALLA LUCE	6-7, scale 1-8 (ISO 105-B02)	7-8, scale 1-8 (ISO 105-B02)	≥6, scale 1-8 (ISO 105-B02)	6-7, scale 1-8 (ISO 105-B02)
<b>FLAME RESISTANCE</b> RESISTENZA AL FUOCO	BS 5852 Part 1 EN 1021 – 1/2 UNI 9175 Classe 1 IM US CA TB 117-2013	UNI 9175 Classe 1 IM EN 1021 – 1/2 DIN 4102-1 B2	DIN 4102-1 B2 BS 5852 Crib 5 EN 1021 – 1/2 EN 13501-1, C-s3, d0 FAR 25.853 App F Part 1 IMO res. A.652 NF D60-013 AM18 NF P92 507 M1 NY/NJ - Port Authority UFAC Fabric Class 1 German fire standard B1 with treatment German fire standard B2 US CA TB 133 US CA TB 117-2013	BS 5852 Part 1 EN 1021 – 1/2 IMO res. A.652 (16) UNI 9175 Classe 1 IM US CA TB 117-2013
<b>ANTIBACTERIAL AND ANTIVIRAL PROPERTIES</b> PROPRIETÀ ANTIBATTERICHE E ANTIVIRALI	/	PERMABLOK®: ISO 18184 – ISO 21702 – ISO 22196	/	/
<b>APPROVED</b> OMOLOGATO	/	 PRODUCT CERTIFIED FOR LOW CHEMICAL EMISSIONS UL GREENGUARD UL 2818 10166-420		/
<b>CLEANING</b> LAVAGGIO		/		



C



Collection / Collezione  
**• SPRADLING®**  
 VALENCIA™  
 from C150 to C162



# A

**A70÷A96**

**COMPOSITION**  
COMPOSIZIONE

85% PVC  
15% Polyester

**WEIGHT**  
GRAMMATURA

550 g/m<sup>2</sup>  
(16.22 oz/yd<sup>2</sup>)

**ABRASION**  
ABRASIONE

50.000 cycles  
Martindale  
(EN ISO 5470-2)

**RUBBING FASTNESS**  
SOLIDITÀ ALLO SFREGAMENTO

Dry and Wet 5, scale 1-5  
(ISO 105-X12)

**LIGHT FASTNESS**  
SOLIDITÀ ALLA LUCE

6, scale 1-8  
(ISO 105-B02)

**FLAME RESISTANCE**  
RESISTENZA AL FUOCO

BS 5852 Part 1  
US CA TB 117-2013 - Compliant to  
the criteria certifying the absence  
of flame retardant chemicals (AB 2998)

**CLEANING**  
LAVAGGIO



# H

**H20÷H35 | H100÷H108**

63% Polyurethane  
29% Cotton  
8% Polyester

480 g/m<sup>2</sup>  
(14.16 oz/yd<sup>2</sup>)

150.000 cycles  
Martindale  
(EN ISO 12947-2)

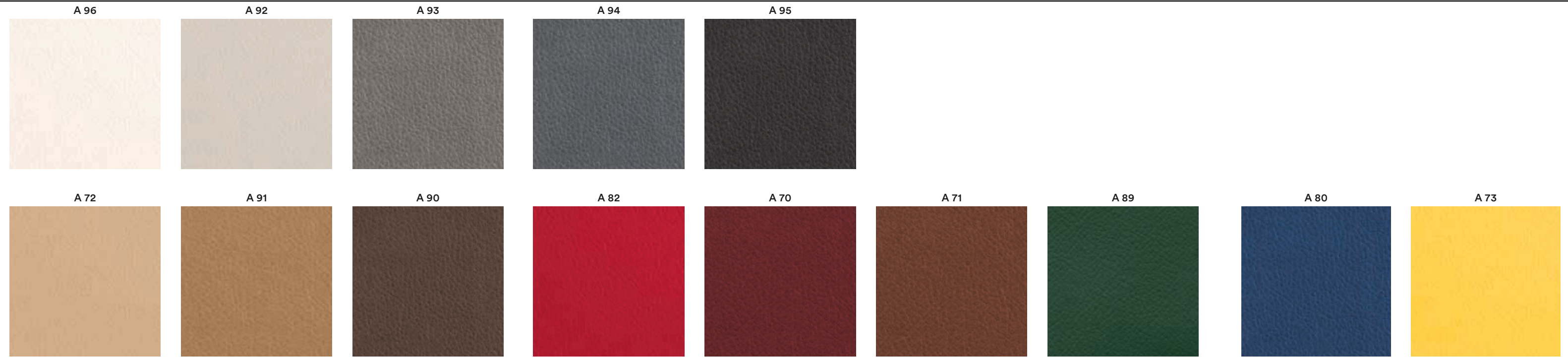
/

5-6, scale 1-8  
(ISO 105-B02)

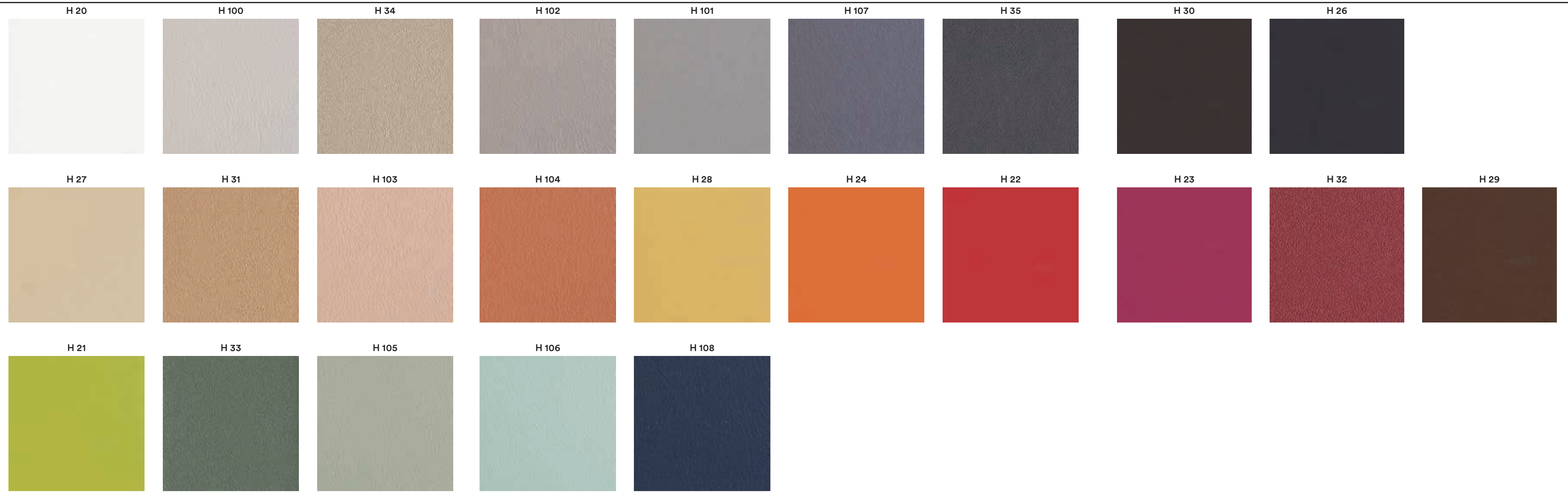
BS 5852 Part 1  
BS 5852 Crib 5  
EN 1021 - 1/2  
IMO FTP Code 2010  
ONORM B 3825  
UNI 9175 Classe 1 IM  
US CA TB 117-2013 - Compliant to  
the criteria certifying the absence of  
flame retardant chemicals (AB 2998)



A



H



# P

	PBI, PLA, PGC, PSA, PGA, PBE, PGN, PTA, PTE, PRO, PGR, PMA, PNE	PGCF, PGRF, PTEF, PMAF	PBS, PCO, PMS, PVE
<b>COMPOSITION</b> COMPOSIZIONE	<b>Mid grain leather</b> Pelle mezzo fiore	<b>Perforated mid grain leather</b> Pelle mezzo fiore traforata	<b>Vintage mid grain leather</b> Pelle mezzo fiore anticata
<b>WEIGHT</b> GRAMMATURA	0.9-1.1 mm (0.035-0.043 in)	0.9-1.1 mm (0.035-0.043 in)	0.8-1.0 mm (0.031-0.039 in)
<b>RUBBING FASTNESS</b> SOLIDITÀ ALLO SFREGAMENTO	Dry (500 Cycles) and Wet (250 Cycles) ≥4 (EN ISO 11640:1998)	Dry (500 Cycles) and Wet (250 Cycles) ≥4 (EN ISO 11640:1998)	Dry (50 Cycles) and Wet (20 Cycles) ≥3 (EN ISO 11640:1998)
<b>LIGHT FASTNESS</b> SOLIDITÀ ALLA LUCE	≥5 (ISO 105 B02) (MET.5)	≥5 (ISO 105 B02) (MET.5)	≥3 (ISO 105-B02) (MET.5)
<b>FLAME RESISTANCE</b> RESISTENZA AL FUOCO	BS 5852:1979 BS EN 1021-1-2:2006 US CA TB 117-2013 - Compliant to the criteria certifying the absence of flame retardant chemicals (AB 2998)	BS 5852:1979 BS EN 1021-1-2:2006	BS 5852:1979 BS EN 1021-1-2:2006
<b>APPROVED</b> OMOLOGATO			/
<b>CLEANING</b> LAVAGGIO	<b>Clean with a damp cloth using water. Do not use detergents, solvents, bleached, abrasives.</b> Pulire con un panno umido d'acqua. Non usare detersivi, solventi, candeggianti, abrasivi.	<b>Clean with a damp cloth using water. Do not use detergents, solvents, bleached, abrasives.</b> Pulire con un panno umido d'acqua. Non usare detersivi, solventi, candeggianti, abrasivi.	<b>Clean with a damp cloth and warm water. Do not use detergents, solvents, bleached, abrasives.</b> Pulire con acqua calda e un panno umido. Non usare detersivi, solventi, candeggianti, abrasivi.

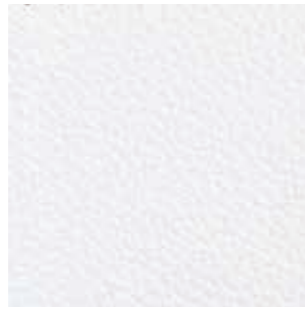
# P

Collection / Collezione

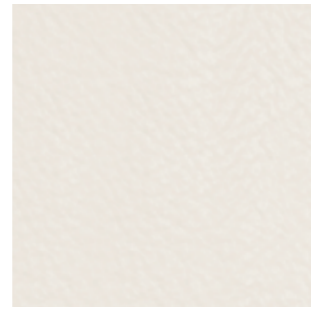


LINEA

PBI



PLA



PGC



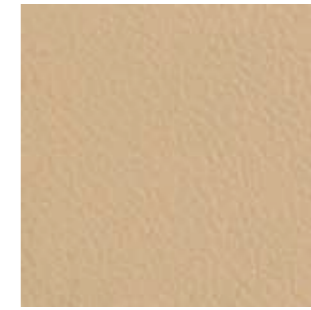
PSA



PGA



PBE



PGN



PTA



PTE



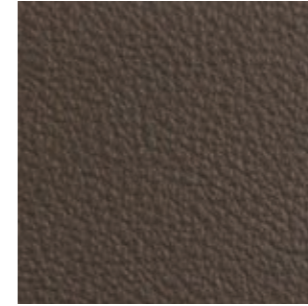
PRO



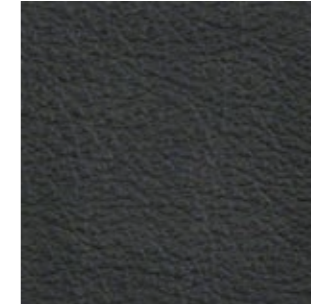
PGR



PMA



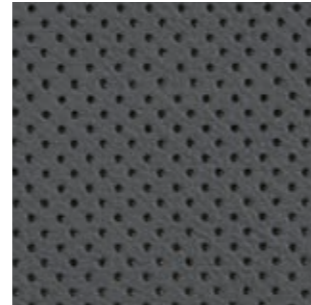
PNE



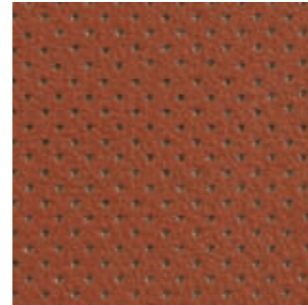
PGCF



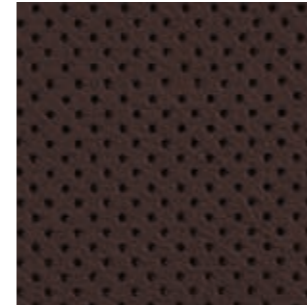
PGRF



PTEF



PMAF



only for collections / solo per collezioni



Vic and Vic Metal

**Inner part of the back,  
upper part of the seat**  
Lato interno dello schienale  
e parte superiore del sedile

Collection / Collezione

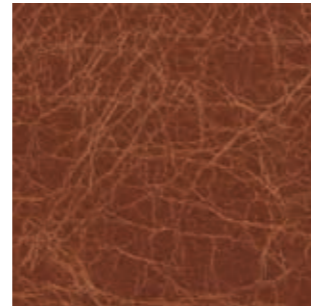


TUSCANIA

PBS



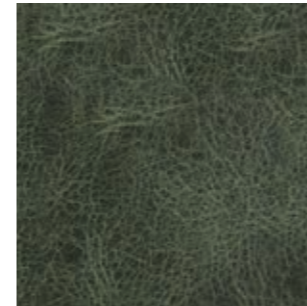
PCO



PMS



PVE



only for collections / solo per collezioni



Malmö



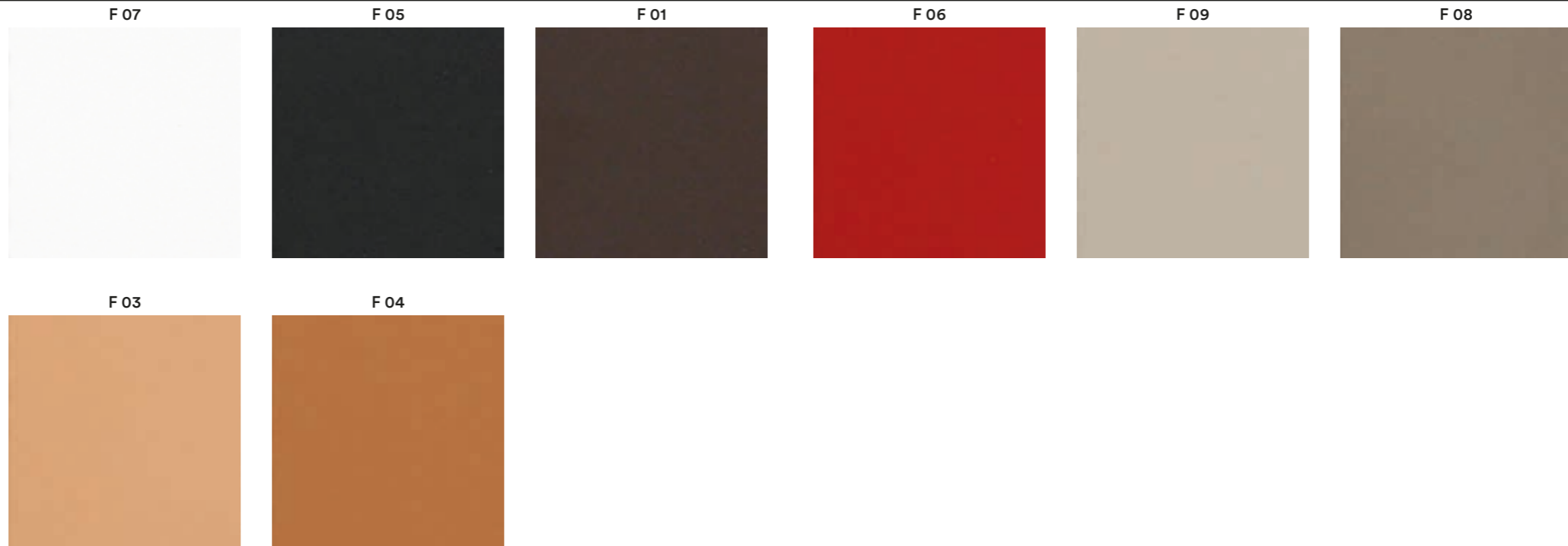
Inga

# F

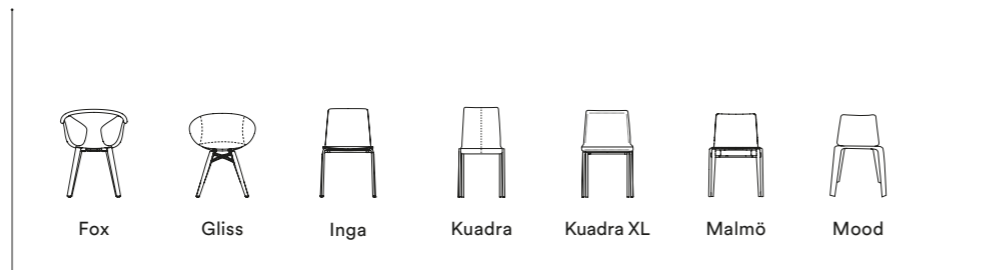
	<b>F01÷F09</b>	<b>F11÷F19</b>
<b>COMPOSITION</b> COMPOSIZIONE	<b>Genuine hard leather, tanned with vegetable substances</b> Cuoio naturale, conciato con sostanze vegetali	<b>Regenerated hard leather. Tanned leather cuttings and shavings linked with natural rubber lattelx</b> Cuoio rigenerato. Ritagli e rasatura di cuoio conciato legati con lattice di gomma naturale
<b>WEIGHT</b> GRAMMATURA	2 mm (0.079 in)	2 mm (0.079 in)
<b>RUBBING FASTNESS</b> SOLIDITÀ ALLO SFREGAMENTO	<b>Satisfactory up to maximum 700 abrasions in humid environment and 1000 abrasions in dry environment</b> Soddisfacente sino a max 700 abrasioni all'umido e 1000 abrasioni al secco	Dry and Wet >1000 (UNI EN ISO 11640)
<b>LIGHT FASTNESS</b> SOLIDITÀ ALLA LUCE	/	4-5 Xenotest Method
<b>FLAME RESISTANCE</b> RESISTENZA AL FUOCO	/	BS EN 1021 1&2 BS 5852 Part 1 US CA TB 117 E Part 1
<b>CLEANING</b> LAVAGGIO	<b>Clean with a damp cloth using water</b> Pulire con un panno umido d'acqua	<b>Clean with a damp cloth using water</b> Pulire con un panno umido d'acqua

# F

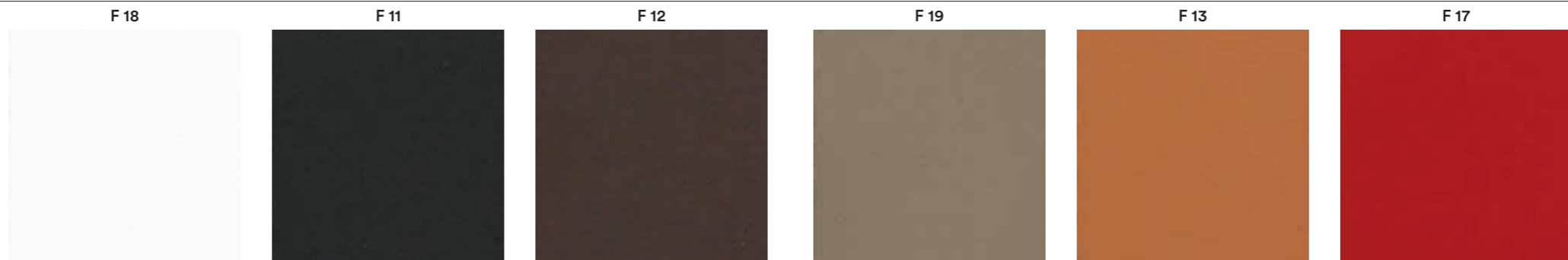
**GENUINE HARD LEATHER**  
CUOIO NATURALE



only for collections / solo per collezioni



**REGENERATED HARD LEATHER**  
CUOIO RIGENERATO



only for collections / solo per collezioni



	<b>E</b>	<b>G</b>		<b>H</b>	<b>N</b>
	<b>E01÷E09</b>	<b>G230÷G239</b>	<b>G180÷G185</b>	<b>H40÷H53</b>	<b>N20÷N27</b>
<b>COMPOSITION</b> COMPOSIZIONE	100% Cotton	100% Cotton	100% TREVIRA CS®	100% TREVIRA CS®	100% Polyester FR
<b>WEIGHT</b> GRAMMATURA	450 g/m² (13.27 oz/yd²)	540 g/m² (15.93 oz/yd²)	455 g/m² (13.48 oz/yd²)	470 g/m² (13.86 oz/yd²)	685 g/m² (20.22 oz/yd²)
<b>ABRASION</b> ABRASIONE	50.000 cycles Martindale (EN ISO 12947-2)	70.000 cycles Martindale (EN ISO 12947-2)	50.000 cycles Martindale (EN ISO 12947)	190.000 cycles Martindale (EN ISO 12947-2)	100.000 cycles Martindale (EN ISO 12947)
<b>RUBBING FASTNESS</b> SOLIDITÀ ALLO SFREGAMENTO	Dry 4-5 and Wet 3-5, scale 1-5 (ISO 105-X12)	Dry and Wet 4-5, scale 1-5 (ISO 105-X12)	Dry and Wet 4-5, scale 1-5 (ISO 105-X12)	Dry and Wet 4-5, scale 1-5 (ISO 105-X12)	Dry 5 and Wet 4-5, scale 1-5 (ISO 105-X12)
<b>PILLING</b>	/	5, scale 1-5 (EN ISO 12945-2)	4-5, scale 1-5 (EN ISO 12945)	5, scale 1-5 (EN ISO 12945-2)	4, scale 1-5 (EN ISO 12945)
<b>LIGHT FASTNESS</b> SOLIDITÀ ALLA LUCE	4-6, scale 1-8 (ISO 105-B02)	4-5, scale 1-8 (ISO 105-B02)	6, scale 1-8 (ISO 105-B02)	4-5, scale 1-8 (ISO 105-B02)	5-6, scale 1-8 (ISO 105-B02)
<b>SOUND ABSORPTION</b> ASSORBIMENTO ACUSTICO	/	folded: $\alpha_w=0.75$ (EN ISO 354)	folded: $\alpha_w=0.85$ Class B (EN ISO 354)	folded: $\alpha_w=0.70$ (EN ISO 354)	folded: $\alpha_w=0.80$ Class B (EN ISO 354)
<b>FLAME RESISTANCE</b> RESISTENZA AL FUOCO	BS 5852 Part 1	BS 5852 Part 1 US CA TB 117-2013 - Compliant to the criteria certifying the absence of flame retardant chemicals (AB 2998)	ASTM E84 Class A Unadhered AS/NZS 3837 Class 1 BS 5852 Part 1 BS 5852 Crib 5 BS 5867 Part 2 type B DIN 4102 B1 EN 1021 – 1/2 EN 13501-1, B-s1, d0 GB 8624 B1 IMO FTP Code 2010: Part 8 IMO FTP Code 2010: Part 5 NF D60-013 NF P92 507 M1 ONORM B1/Q1 CAN ULC S102 SN 198 898 5.2 UNI 9177 Classe 1 UNI 9175 Classe 1 IM US CA TB 117-2013	BS 5852 Part 0,1 DIN 4102 B1 EN 1021 – 1/2 IMO MSC 307(88) Annex 1 Part 7-8 NF P92 503-507 M1 NFPA 260 UNI 9177 Classe 1 UNI 9175 Classe 1 IM US CA TB 117-2013	AS/NZS 1530.3 ASTM E84 Class A Unadhered AS/NZS 3837 Class 1 BS 5852 Crib 5 BS 5867 Part 2 type B DIN 4102 B1 EN 1021 – 1/2 EN 13501-1, B-s1, d0 EN 13773 Class 1 GB 8624 B1 IMO FTP Code 2010: Part 8 NFPA 260 NFPA 701 NF P92 507 M1 CAN ULC S102 S109 SN 198 898 5.2 UNI 9175 Classe 1 IM US CA TB 117-2013
<b>APPROVED</b> OMOLOGATO	/	/	 <b>PRODUCT CERTIFIED FOR LOW CHEMICAL EMISSIONS</b> UL COMF0 UL 2818 170168-420	/	 <b>PRODUCT CERTIFIED FOR LOW CHEMICAL EMISSIONS</b> UL COMF0 UL 2818 170168-420
<b>CLEANING</b> LAVAGGIO					

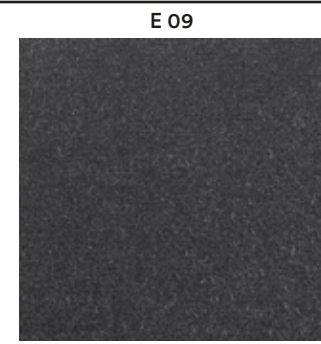
# E

Collection / Collezione

• DEDAR

ADAMO & EVA

from E01 to E09



E09



E04



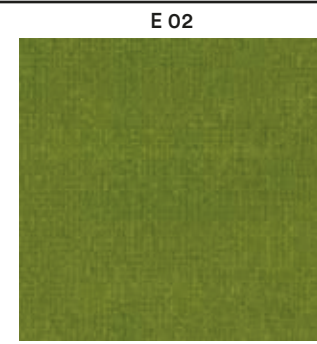
E03



E01



E06



E02



E08



E07



E05

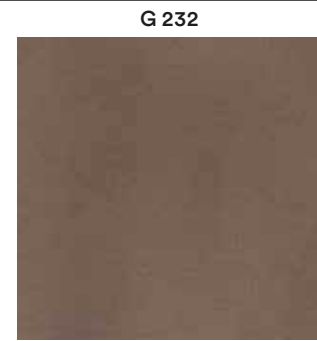
# G



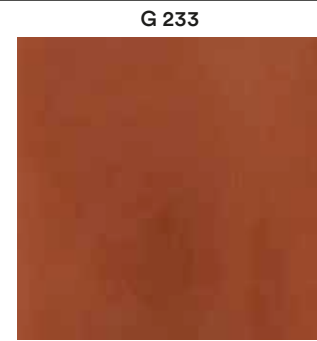
G230



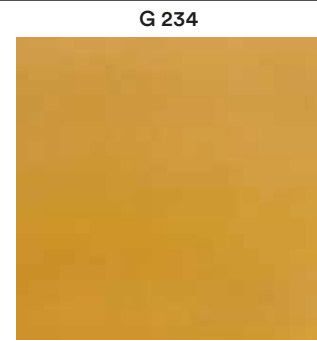
G231



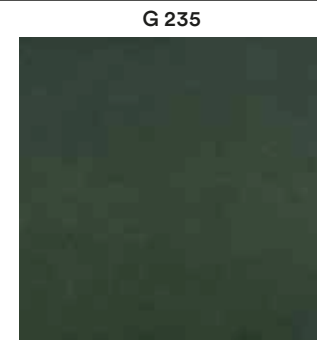
G232



G233



G234



G235



G236



G237



G238



G239



Collection / Collezione

• kvadrat

STILL

from G180 to G185

DESIGNER Georgina Wright



G180



G182



G181



G185



G183



G184



H52



H47



H41



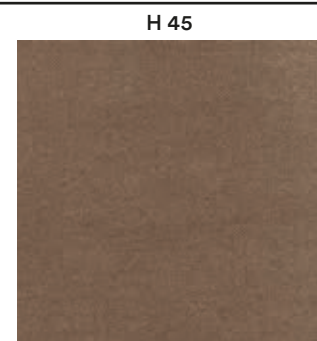
# H



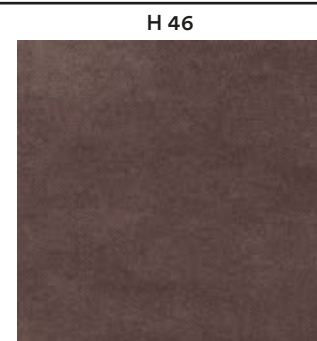
H40



H44



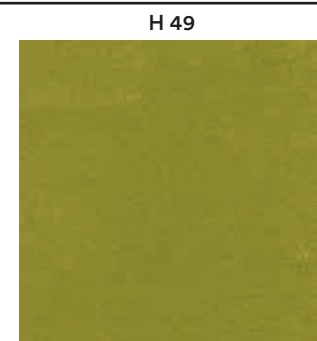
H45



H46



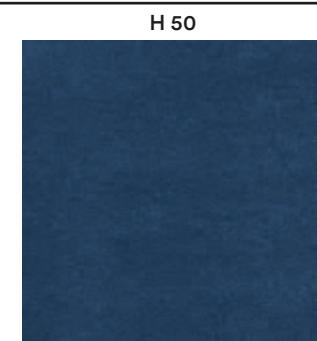
H43



H49



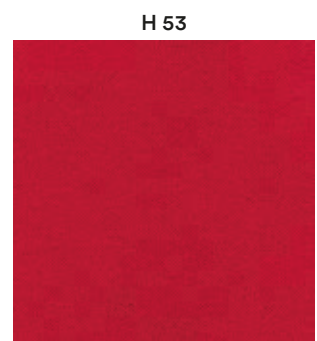
H51



H50



H48



H53



H42



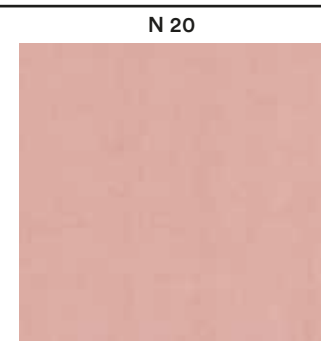
# N

Collection / Collezione

• kvadrat - SAHCO

BALBOA

from N20 to N27



N20



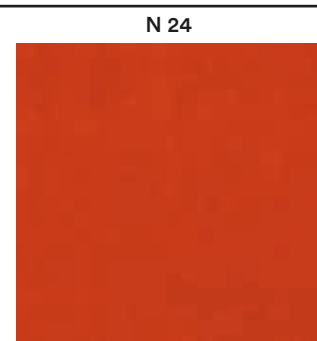
N21



N22



N23



N24



N25



N26



N27